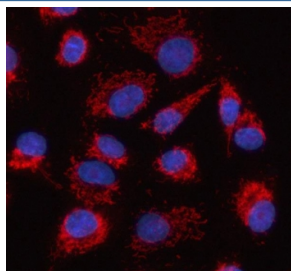


## HDGFL2 Antibody / Hepatoma-derived growth factor-related protein 2 (RQ8795)

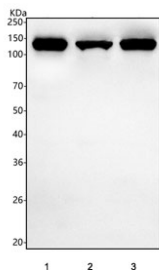
Catalog No.	Formulation	Size
RQ8795	0.5mg/ml if reconstituted with 0.2ml sterile DI water	100 ug

[Bulk quote request](#)

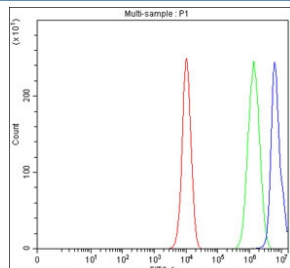
<b>Availability</b>	1-3 days
<b>Species Reactivity</b>	Human
<b>Format</b>	Antigen affinity purified
<b>Clonality</b>	Polyclonal (rabbit origin)
<b>Isotype</b>	Rabbit IgG
<b>Purity</b>	Antigen affinity chromatography
<b>Buffer</b>	Lyophilized from 1X PBS with 2% Trehalose
<b>UniProt</b>	Q7Z4V5
<b>Localization</b>	Nuclear, cytoplasmic
<b>Applications</b>	Western Blot : 1-2ug/ml Immunofluorescence : 5ug/ml Flow Cytometry : 1-3ug/million cells ELISA : 0.1-0.5ug/ml
<b>Limitations</b>	This HDGFL2 antibody is available for research use only.



Immunofluorescent staining of FFPE human A549 cells with HDGFL2 antibody (red) and DAPI nuclear stain (blue). HIER: steam section in pH6 citrate buffer for 20 min.



Western blot testing of human 1) PC-3, 2) SH-SY5Y and 3) HepG2 cell lysate with HDGFL2 antibody. Predicted molecular weight ~74 kDa, commonly observed at 74-120 kDa.



Flow cytometry testing of fixed and permeabilized human PC-3 cells with HDGFL2 antibody at 1ug/million cells (blocked with goat sera); Red=cells alone, Green=isotype control, Blue= HDGFL2 antibody.

## Description

This gene encodes a member of the hepatoma-derived growth factor (HDGF) family. The protein includes an N-terminal PWWP domain that binds to methyl-lysine-containing histones, with specific binding of this protein to tri-methylated lysines 36 and 79 of histone H3, and di- and tri-methylated lysine 20 of histone H4. The protein functions in LEDGF/p75-independent HIV-1 replication by determining HIV-1 integration site selection. Alternative splicing of this gene results in multiple transcript variants.

## Application Notes

Optimal dilution of the HDGFL2 antibody should be determined by the researcher.

## Immunogen

An E.coli-derived human recombinant protein (amino acids E472-K563) was used as the immunogen for the HDGFL2 antibody.

## Storage

After reconstitution, the HDGFL2 Antibody can be stored for up to one month at 4oC. For long-term, aliquot and store at -20oC. Avoid repeated freezing and thawing.