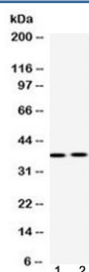


## HDGF Antibody (R32600)

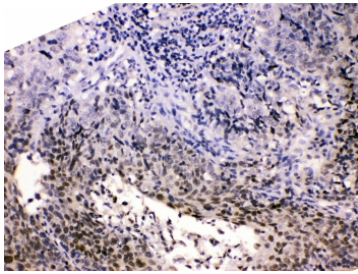
Catalog No.	Formulation	Size
R32600	0.5mg/ml if reconstituted with 0.2ml sterile DI water	100 ug

**Bulk quote request**

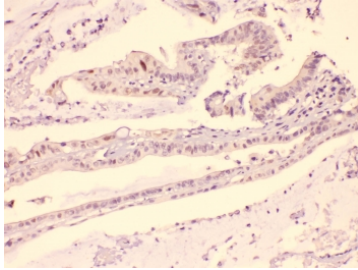
<b>Availability</b>	1-3 business days
<b>Species Reactivity</b>	Human, Mouse, Rat
<b>Format</b>	Antigen affinity purified
<b>Clonality</b>	Polyclonal (rabbit origin)
<b>Isotype</b>	Rabbit IgG
<b>Purity</b>	Antigen affinity
<b>Buffer</b>	Lyophilized from 1X PBS with 2.5% BSA and 0.025% sodium azide
<b>UniProt</b>	P51858
<b>Localization</b>	Nuclear, cytoplasmic
<b>Applications</b>	Western Blot : 0.5-1ug/ml Immunohistochemistry (FFPE) : 1-2ug/ml Immunofluorescence (FFPE) : 2-4ug/ml Flow Cytometry : 1-3ug/million cells
<b>Limitations</b>	This HDGF antibody is available for research use only.



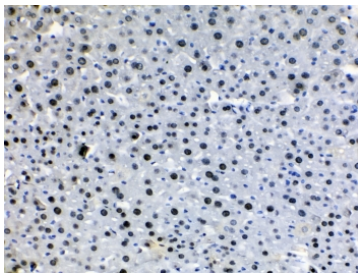
Western blot testing of 1) rat liver and 2) human 22RV1 (prostate carcinoma) lysate with HDGF antibody at 0.5ug/ml. Predicted molecular weight ~26 kDa but routinely observed at ~38 kDa.



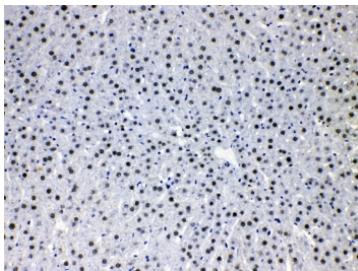
IHC testing of FFPE human lung carcinoma with HDGF antibody at 1ug/ml. HIER: steam section in pH6 citrate buffer for 20 min.



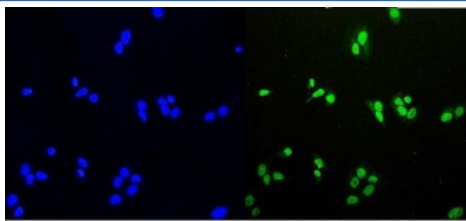
IHC testing of FFPE human intestinal carcinoma with HDGF antibody at 1ug/ml. HIER: steam section in pH6 citrate buffer for 20 min.



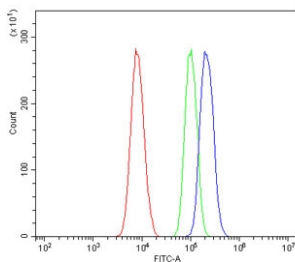
IHC testing of FFPE mouse liver tissue with HDGF antibody at 1ug/ml. HIER: steam section in pH6 citrate buffer for 20 min.



IHC testing of FFPE rat liver tissue with HDGF antibody at 1ug/ml. HIER: steam section in pH6 citrate buffer for 20 min.



Immunofluorescent staining of FFPE human U-2 OS cells with HDGF antibody (green) and DAPI nuclear stain (blue). HIER: steam section in pH6 citrate buffer for 20 min.



Flow cytometry testing of human A431 cells with HDGF antibody at 1ug/million cells (blocked with goat sera); Red=cells alone, Green=isotype control, Blue= HDGF antibody.

## Description

Hepatoma-derived growth factor (HDGF), also known as high mobility group protein 1-like 2 (HMG-1L2), is a protein that

in humans is encoded by the HDGF gene. This gene encodes a member of the hepatoma-derived growth factor family. The encoded protein has mitogenic and DNA-binding activity and may play a role in cellular proliferation and differentiation. High levels of expression of this gene enhance the growth of many tumors. And this gene was thought initially to be located on chromosome X; however, that location has been determined to correspond to a related pseudogene. Alternatively spliced transcript variants encoding distinct isoforms have been described.

## Application Notes

Optimal dilution of the HDGF antibody should be determined by the researcher.

## Immunogen

Amino acids 61-97 (KDLFPYEEESKEKFGKPNKRKGFSEGLWEIENNPTVKA-human) were used as the immunogen for the HDGF antibody.

## Storage

After reconstitution, the HDGF antibody can be stored for up to one month at 4oC. For long-term, aliquot and store at -20oC. Avoid repeated freezing and thawing.