

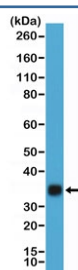
HCGb Antibody / Human Chorionic Gonadotropin beta [clone RM330] (R20354)

Catalog No.	Formulation	Size
R20354-0.1ML	Antibody in PBS with 50% glycerol, 1% BSA and 0.09% sodium azide	100 ul

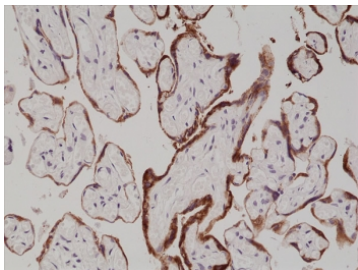
Recombinant **RABBIT MONOCLONAL**

[Bulk quote request](#)

Availability	1-3 business days
Species Reactivity	Human
Format	Purified
Clonality	Recombinant Rabbit Monoclonal
Isotype	Rabbit IgG
Clone Name	RM330
Purity	Protein A purified from animal origin-free supernatant
UniProt	P01215
Localization	Cytoplasmic, Secreted
Applications	Immunohistochemistry (FFPE) : 1:500-1:1000 Western Blot : 1:5000-1:20000 ELISA : 1:1000-1:10000
Limitations	This recombinant HCGb antibody is available for research use only.



Western blot testing of hCG protein purified from human urine using recombinant HCGb antibody at 1:20,000. Predicted molecular weight ~18 kDa (beta subunit) and ~26 kDa (hCG complex), but can be observed at up to ~40 kDa due to glycosylation.



IHC staining of FFPE human placenta tissue with recombinant HCGb antibody at 1:1000.

Description

This antibody reacts to hCG (human Chorionic Gonadotropin). The antibody recognizes both the native complex and the beta subunit of hCG.

Application Notes

The stated application concentrations are suggested starting points. Titration of the recombinant HCGb antibody may be required due to differences in protocols and secondary/substrate sensitivity.

Immunogen

Native hCG protein purified from Human Urine was used as the immunogen for the recombinant HCGb antibody.

Storage

Store the recombinant HCGb antibody at -20oC.