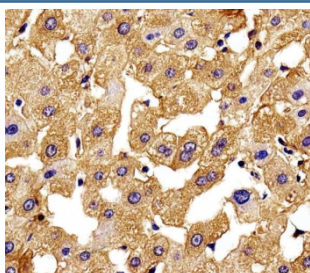


HBG2 Antibody / Hemoglobin subunit gamma-2 (F54743)

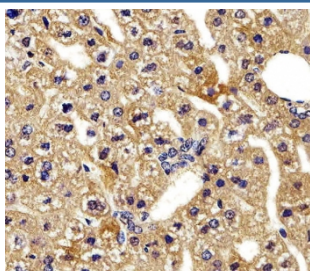
| Catalog No. | Formulation | Size |
|---------------|--|---------|
| F54743-0.4ML | In 1X PBS, pH 7.4, with 0.09% sodium azide | 0.4 ml |
| F54743-0.08ML | In 1X PBS, pH 7.4, with 0.09% sodium azide | 0.08 ml |

Bulk quote request

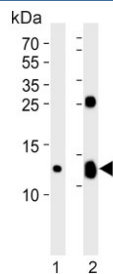
| | |
|---------------------------|--|
| Availability | 1-3 business days |
| Species Reactivity | Human, Mouse |
| Format | Purified |
| Clonality | Polyclonal (rabbit origin) |
| Isotype | Rabbit Ig |
| Purity | Antigen affinity purified |
| UniProt | P69892 |
| Applications | Immunohistochemistry (FFPE) : 1:25 Flow Cytometry : 1:25 (1x10 ⁶ cells) Western Blot : 1:500-1:1000 |
| Limitations | This HBG2 antibody is available for research use only. |



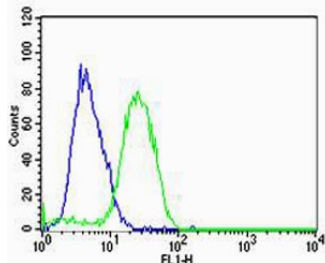
IHC testing of FFPE human liver tissue with HBG2 antibody. HIER: steam section in pH6 citrate buffer for 20 min and allow to cool prior to staining.



IHC testing of FFPE mouse liver tissue with HBG2 antibody. HIER: steam section in pH6 citrate buffer for 20 min and allow to cool prior to staining.



Western blot testing of human 1) K562 and 2) placenta lysate with HBG2 antibody.
Predicted molecular weight ~16 kDa.



Flow cytometry testing of human U-87 MG cells with HBG2 antibody; Blue=isotype control, Green= HBG2 antibody.

Description

Gamma chains make up the fetal hemoglobin F, in combination with alpha chains. [UniProt]

Application Notes

The stated application concentrations are suggested starting points. Titration of the HBG2 antibody may be required due to differences in protocols and secondary/substrate sensitivity.

Immunogen

A portion of amino acids 101-133 from the human protein was used as the immunogen for the HBG2 antibody.

Storage

Aliquot the HBG2 antibody and store frozen at -20oC or colder. Avoid repeated freeze-thaw cycles.