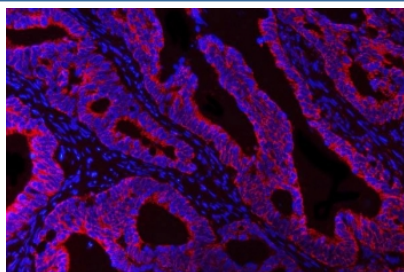


HBEGF Antibody / DT-R (RQ7309)

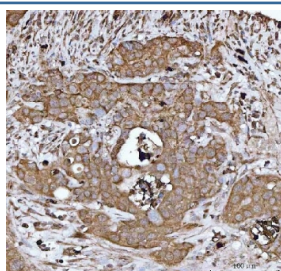
Catalog No.	Formulation	Size
RQ7309	0.5mg/ml if reconstituted with 0.2ml sterile DI water	100 ug

Bulk quote request

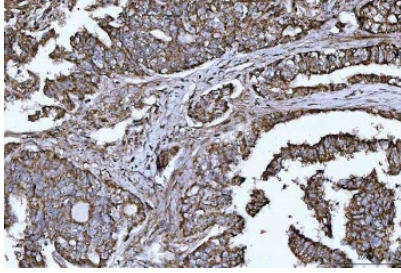
Availability	1-3 business days
Species Reactivity	Human, Mouse, Rat
Format	Antigen affinity purified
Clonality	Polyclonal (rabbit origin)
Isotype	Rabbit IgG
Purity	Antigen affinity purified
Buffer	Lyophilized from 1X PBS with 2% Trehalose
UniProt	Q99075
Applications	Western Blot : 0.5-1ug/ml Immunohistochemistry (FFPE) : 2-5ug/ml Flow Cytometry : 1-3ug/million cells Immunofluorescence : 5ug/ml
Limitations	This HBEGF antibody is available for research use only.



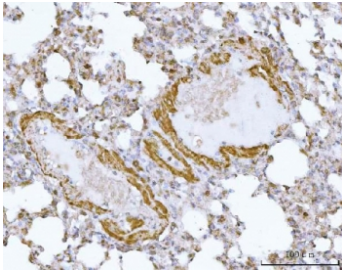
Immunofluorescent staining of FFPE human colorectal adenocarcinoma tissue with HBEGF antibody (red) and DAPI nuclear stain (blue). HIER: steam section in pH8 EDTA buffer for 20 min.



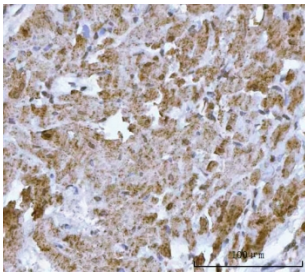
IHC staining of FFPE human appendiceal adenocarcinoma tissue with HBEGF antibody. HIER: boil tissue sections in pH8 EDTA for 20 min and allow to cool before testing.



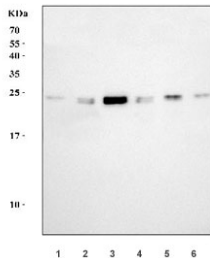
IHC staining of FFPE human lung adenocarcinoma tissue with HBEGF antibody. HIER: boil tissue sections in pH8 EDTA for 20 min and allow to cool before testing.



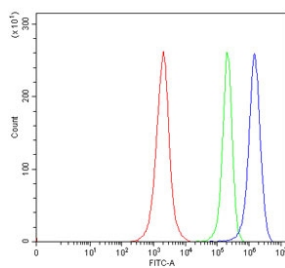
IHC staining of FFPE mouse lung tissue with HBEGF antibody. HIER: boil tissue sections in pH8 EDTA for 20 min and allow to cool before testing.



IHC staining of FFPE rat respiratory smooth muscle tissue with HBEGF antibody. HIER: boil tissue sections in pH8 EDTA for 20 min and allow to cool before testing.



Western blot testing of 1) human HeLa, 2) human K562, 3) human Jurkat, 4) human U-251, 5) rat C6 and 6) mouse lung tissue lysate with HBEGF antibody. Predicted molecular weight ~23 kDa but may be observed at higher molecular weights due to glycosylation.



Flow cytometry testing of fixed human Jurkat cells with HBEGF antibody at 1ug/million cells (blocked with goat sera); Red=cells alone, Green=isotype control, Blue= HBEGF antibody.

Description

Heparin-binding EGF-like growth factor (HB-EGF), also called Diphtheria toxin receptor (DT-R), is a member of the EGF family of proteins that in humans is encoded by the HBEGF gene. Enables growth factor activity and heparin binding activity. Involved in several processes, including epidermal growth factor receptor signaling pathway; positive regulation of protein kinase B signaling; and positive regulation of wound healing. Located in cell surface and extracellular space. Implicated in glomerulosclerosis and perinatal necrotizing enterocolitis.

Application Notes

Optimal dilution of the HBEGF antibody should be determined by the researcher.

Immunogen

Amino acids KKRDPCLRKYKDFCIHGGECKYVKE were used as the immunogen for the HBEGF antibody.

Storage

After reconstitution, the HBEGF antibody can be stored for up to one month at 4oC. For long-term, aliquot and store at -20oC. Avoid repeated freezing and thawing.