

Haptoglobin Antibody [clone HP/3840] (V9405)

Catalog No.	Formulation	Size
V9405-100UG	0.2 mg/ml in 1X PBS with 0.1 mg/ml BSA (US sourced), 0.05% sodium azide	100 ug
V9405-20UG	0.2 mg/ml in 1X PBS with 0.1 mg/ml BSA (US sourced), 0.05% sodium azide	20 ug
V9405SAF-100UG	1 mg/ml in 1X PBS; BSA free, sodium azide free	100 ug

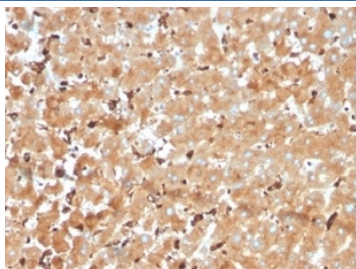
[Bulk quote request](#)

Availability	1-3 business days
Species Reactivity	Human
Format	Purified
Clonality	Monoclonal (mouse origin)
Isotype	Mouse IgG1, kappa
Clone Name	HP/3840
Purity	Protein A/G affinity
UniProt	P00738
Localization	Secreted, cytoplasmic
Applications	Immunohistochemistry (FFPE) : 1-2ug/ml
Limitations	This Haptoglobin antibody is available for research use only.

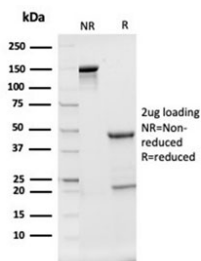
Human Protein Microarray Specificity Validation



Analysis of HuProt(TM) microarray containing more than 19,000 full-length human proteins using Haptoglobin antibody (clone HP/3840). These results demonstrate the foremost specificity of the HP/3840 mAb. Z- and S- score: The Z-score represents the strength of a signal that an antibody (in combination with a fluorescently-tagged anti-IgG secondary Ab) produces when binding to a particular protein on the HuProt(TM) array. Z-scores are described in units of standard deviations (SD's) above the mean value of all signals generated on that array. If the targets on the HuProt(TM) are arranged in descending order of the Z-score, the S-score is the difference (also in units of SD's) between the Z-scores. The S-score therefore represents the relative target specificity of an Ab to its intended target.



IHC staining of FFPE human liver tissue with Haptoglobin antibody (clone HP/3840) at 2ug/ml. HIER: boil tissue sections in pH 9 10mM Tris with 1mM EDTA for 20 min and allow to cool before testing.



SDS-PAGE analysis of purified, BSA-free Haptoglobin antibody (clone HP/3840) as confirmation of integrity and purity.

Description

Haptoglobin (Hp) is a blood plasma protein that functions to bind free Hemoglobin that has been released from erythrocytes, thereby inhibiting its oxidative activity. During this process, Haptoglobin sequesters the iron within Hemoglobin, preventing iron-utilizing bacteria from benefitting from hemolysis. This function suggests that Haptoglobin concentrations may increase in response to inflammation. The resulting Haptoglobin-Hemoglobin complex is then removed by the reticulo-endothelial system. Due to cleavage of a common precursor protein during protein synthesis, Haptoglobin consists of two a and two b chains, connected by disulfide bridges. In human, Haptoglobin exists in two allelic forms designated Haptoglobin 1 (Hp1) and Haptoglobin 2 (Hp2), where Hp2 is the result of a partial Hp1 gene duplication. There are three known phenotypes of human Haptoglobin: Hp1-1, Hp2-1 and Hp2-2, which may be associated with diabetes and cardiovascular disease pathology and a susceptibility to Parkinson's and Crohn's disease. Haptoglobin levels are useful in diagnosing hemolytic anemia, the abnormal breakdown of red blood cells. Haptoglobin is expressed in mammalian hepatocytes as well as other tissues such as skin, lung and kidney.

Application Notes

Optimal dilution of the Haptoglobin antibody should be determined by the researcher.

Immunogen

A portion of amino acids 100-250 was used as the immunogen for the Haptoglobin antibody.

Storage

Aliquot the Haptoglobin antibody and store frozen at -20°C or colder. Avoid repeated freeze-thaw cycles.