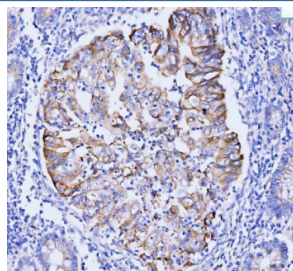


GSPT1/2 Antibody / eRF3A/B (RQ6643)

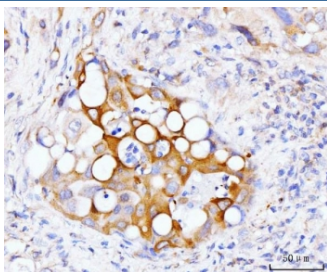
Catalog No.	Formulation	Size
RQ6643	0.5mg/ml if reconstituted with 0.2ml sterile DI water	100 ug

Bulk quote request

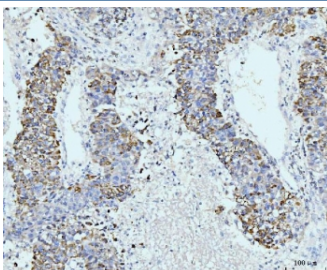
Availability	1-3 business days
Species Reactivity	Human, Mouse, Rat
Format	Antigen affinity purified
Clonality	Polyclonal (rabbit origin)
Isotype	Rabbit IgG
Purity	Antigen affinity purified
Buffer	Lyophilized from 1X PBS with 2% Trehalose
UniProt	P15170, Q8IYD1
Localization	Cytoplasmic
Applications	Western Blot : 1-2ug/ml Immunohistochemistry (FFPE) : 2-5ug/ml Immunofluorescence (FFPE) : 5ug/ml Flow Cytometry : 1-3ug/million cells Direct ELISA : 0.1-0.5ug/ml
Limitations	This GSPT1/2 antibody is available for research use only.



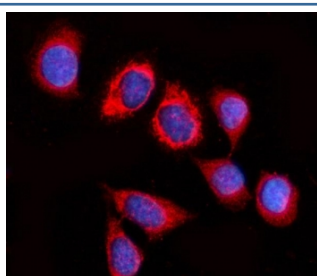
IHC staining of FFPE human gastric adenocarcinoma tissue with GSPT1/2 antibody.
HIER: boil tissue sections in pH8 EDTA for 20 min and allow to cool before testing.



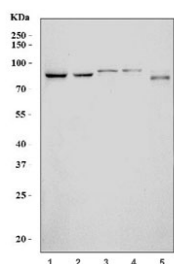
IHC staining of FFPE human gall bladder adenosquamous carcinoma tissue with GSPT1/2 antibody. HIER: boil tissue sections in pH8 EDTA for 20 min and allow to cool before testing.



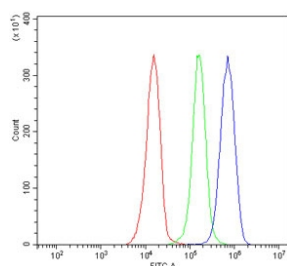
IHC staining of FFPE human liver cancer tissue with GSPT1/2 antibody. HIER: boil tissue sections in pH8 EDTA for 20 min and allow to cool before testing.



Immunofluorescent staining of FFPE human SiHa cells with GSPT1/2 antibody (red) and DAPI nuclear stain (blue). HIER: steam section in pH6 citrate buffer for 20 min.



Western blot testing of 1) human K562, 2) human Raji, 3) rat pancreas, 4) mouse pancreas and 5) mouse NIH 3T3 cell lysate with GSPT1/2 antibody. Expected molecular weight: 58-80 kDa.



Flow cytometry testing of human JK-1 cells with GSPT1/2 antibody at 1ug/million cells (blocked with goat sera); Red=cells alone, Green=isotype control, Blue= GSPT1/2 antibody.

Description

Eukaryotic peptide chain release factor GTP-binding subunit ERF3A/B is an enzyme that in humans is encoded by the GSPT1/2 genes. This gene encodes a GTPase that belongs to the GTP-binding elongation factor family. The encoded protein is a polypeptide release factor that complexes with eukaryotic peptide chain release factor 1 to mediate translation termination. This protein may also be involved in mRNA stability.

Application Notes

Optimal dilution of the GSPT1/2 antibody should be determined by the researcher.

Immunogen

Recombinant human protein (amino acids K138-D499) was used as the immunogen for the GSPT1/2 antibody.

Storage

After reconstitution, the GSPT1/2 antibody can be stored for up to one month at 4oC. For long-term, aliquot and store at -20oC. Avoid repeated freezing and thawing.