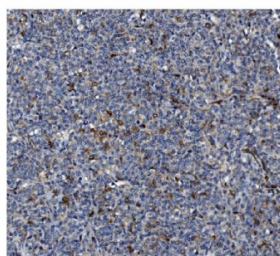


## GSDMD Antibody / Gasdermin D [clone 3D5] (RQ7928)

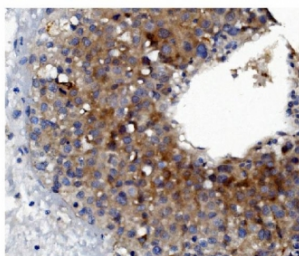
Catalog No.	Formulation	Size
RQ7928	0.5mg/ml if reconstituted with 0.2ml sterile DI water	100 ug

**Bulk quote request**

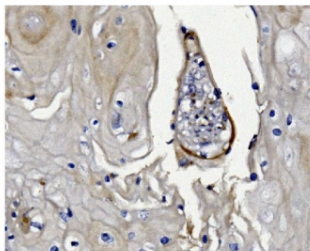
<b>Availability</b>	1-3 business days
<b>Species Reactivity</b>	Human
<b>Format</b>	Antigen affinity purified
<b>Clonality</b>	Monoclonal (mouse origin)
<b>Isotype</b>	Mouse IgG2a
<b>Clone Name</b>	3D5
<b>Purity</b>	Antigen affinity purified
<b>Buffer</b>	Lyophilized from 1X PBS with 2% Trehalose
<b>UniProt</b>	P57764
<b>Localization</b>	Nucleus, cytoplasm, cell membrane, secreted
<b>Applications</b>	Western Blot : 0.5-1ug/ml Immunohistochemistry (FFPE) : 2-5ug/ml
<b>Limitations</b>	This GSDMD antibody is available for research use only.



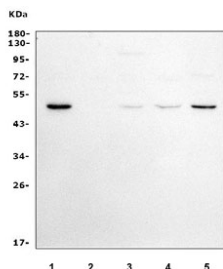
IHC staining of FFPE human lymph node tissue with GSDMD antibody. HIER: boil tissue sections in pH8 EDTA for 20 min and allow to cool before testing.



IHC staining of FFPE human liver cancer tissue with GSDMD antibody. HIER: boil tissue sections in pH8 EDTA for 20 min and allow to cool before testing.



IHC staining of FFPE human esophagus tissue with GSDMD antibody. HIER: boil tissue sections in pH8 EDTA for 20 min and allow to cool before testing.



Western blot testing of human 1) ThP-1, 2) SW620, 3) Jurkat, 4) U-87 MG and 5) PC-3 cell lysate with GSDMD antibody. Predicted molecular weight ~53 kDa.

## Description

Gasdermin D is a member of the gasdermin family. Members of this family appear to play a role in regulation of epithelial proliferation. Gasdermin D has been suggested to act as a tumor suppressor. Alternatively spliced transcript variants have been described.

## Application Notes

Optimal dilution of the GSDMD antibody should be determined by the researcher.

## Immunogen

E. coli-derived recombinant human protein (amino acids M1-H484) was used as the immunogen for the GSDMD antibody.

## Storage

After reconstitution, the GSDMD antibody can be stored for up to one month at 4°C. For long-term, aliquot and store at -20°C. Avoid repeated freezing and thawing.