

## GSDMA Antibody / Gasdermin-A (F55124)

Catalog No.	Formulation	Size
F55124-0.4ML	In 1X PBS, pH 7.4, with 0.09% sodium azide	0.4 ml
F55124-0.08ML	In 1X PBS, pH 7.4, with 0.09% sodium azide	0.08 ml

**Bulk quote request**

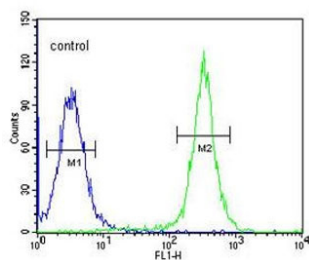
<b>Availability</b>	1-2 business days
<b>Species Reactivity</b>	Human, Mouse
<b>Format</b>	Antigen affinity purified
<b>Clonality</b>	Polyclonal (rabbit origin)
<b>Isotype</b>	Rabbit Ig
<b>Purity</b>	Antigen affinity
<b>UniProt</b>	Q96QA5
<b>Localization</b>	Cytoplasm, cell membrane
<b>Applications</b>	Western Blot : 1:500-1:1000 Immunohistochemistry (FFPE) : 1:50-1:100 Flow Cytometry : 1:10-1:50 per million cells in 0.1ml
<b>Limitations</b>	This GSDMA antibody is available for research use only.



IHC staining of FFPE human skin tissue with GSDMA antibody. HIER: steam section in pH6 citrate buffer for 20 min and allow to cool prior to staining.



Western blot testing of mouse liver tissue lysate with GSDMA antibody. Predicted molecular weight ~49 kDa.



Flow cytometry testing of human HEK293 cells with GSDMA antibody; Blue=isotype control, Green= GSDMA antibody.

## Description

Gasdermin-A is a protein that plays a crucial role in programmed cell death, or pyroptosis, a process that is essential for the body to eliminate infected or damaged cells. This protein acts as a pore-forming molecule, causing the cell membrane to rupture and release pro-inflammatory molecules that signal the immune system to clear away the debris. Recent studies have shown that dysregulation of Gasdermin-A can lead to a variety of health issues, including autoimmune diseases, inflammatory disorders, and even cancer.

## Application Notes

The stated application concentrations are suggested starting amounts. Titration of the GSDMA antibody may be required due to differences in protocols and secondary/substrate sensitivity.

## Immunogen

A portion of amino acids 66-94 from the human protein was used as the immunogen for this GSDMA antibody.

## Storage

Store at 4oC for up to one month. For long term, aliquot the GSDMA antibody and store frozen at -20oC or colder. Avoid repeated freeze-thaw cycles.