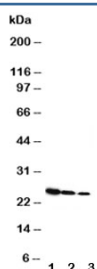


Growth Hormone Antibody (R30109)

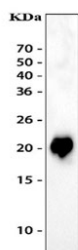
| Catalog No. | Formulation | Size |
|-------------|---|--------|
| R30109 | 0.5mg/ml if reconstituted with 0.2ml sterile DI water | 100 ug |

Bulk quote request

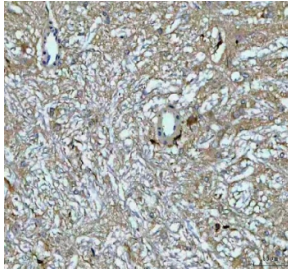
| | |
|---------------------------|--|
| Availability | 1-3 business days |
| Species Reactivity | Rat |
| Format | Antigen affinity purified |
| Clonality | Polyclonal (rabbit origin) |
| Isotype | Rabbit IgG |
| Purity | Antigen affinity |
| Buffer | Lyophilized from 1X PBS with 0.025% sodium azide |
| UniProt | P01244 |
| Applications | Western Blot (recombinant Protein) : 0.5-1ug/ml Immunohistochemistry (FFPE) : 2-5ug/ml ELISA : 0.1-0.5ug/ml (rat protein tested) |
| Limitations | This Growth Hormone antibody is available for research use only. |



Western blot testing of Growth Hormone antibody and Lane 1: Recombinant rat GH protein 10ng; 2: 5ng; 3: 2.5ng



Western blot testing of 5ng of recombinant rat protein with Growth Hormone antibody.



IHC staining of FFPE rat brain tissue with Growth Hormone antibody. HIER: boil tissue sections in pH8 EDTA for 20 min and allow to cool before testing.

Description

Growth Hormone (GH) is mapped to 17q22-q24. Human growth hormone has a molecular mass of 22,005 and contains 191 amino acid residues with 2 disulfide bridges. Rat GH shares 98% amino acid sequence homology with mouse. It binds two receptor molecules and thereby induces signal transduction through receptor dimerization. At high concentrations, GH acts as an antagonist because of a large difference in affinities at the respective binding sites.

Application Notes

The stated application concentrations are suggested starting amounts. Titration of the Growth Hormone antibody may be required due to differences in protocols and secondary/substrate sensitivity.

Immunogen

Rat partial recombinant protein (AA 27-216) was used as the immunogen for this Growth Hormone antibody.

Storage

After reconstitution, the Growth Hormone antibody can be stored for up to one month at 4°C. For long-term, aliquot and store at -20°C. Avoid repeated freezing and thawing.