

Growth Hormone Antibody (pituitary) [clone SPM106] (V3379)

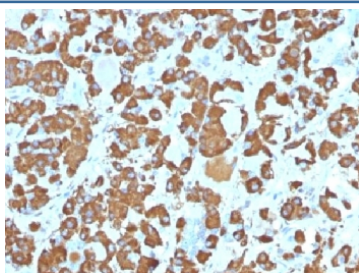
| Catalog No. | Formulation | Size |
|----------------|--|--------|
| V3379-100UG | 0.2 mg/ml in 1X PBS with 0.1 mg/ml BSA (US sourced) and 0.05% sodium azide | 100 ug |
| V3379-20UG | 0.2 mg/ml in 1X PBS with 0.1 mg/ml BSA (US sourced) and 0.05% sodium azide | 20 ug |
| V3379SAF-100UG | 1 mg/ml in 1X PBS; BSA free, sodium azide free | 100 ug |



Citations (1)

[Bulk quote request](#)

| | |
|--------------------|--|
| Species Reactivity | Human |
| Format | Purified |
| Clonality | Monoclonal (mouse origin) |
| Isotype | Mouse IgG2b, kappa |
| Clone Name | SPM106 |
| Purity | Protein G affinity chromatography |
| UniProt | P01241 |
| Gene ID | 2688 |
| Localization | Cytoplasmic |
| Applications | Immunohistochemistry (FFPE) : 1-2ug/ml for 30 min at RT |
| Limitations | This Growth Hormone antibody is available for research use only. |



IHC testing of FFPE human pituitary gland with Growth Hormone antibody (clone SPM106). Required HIER: boil tissue sections in pH 9 10mM Tris with 1mM EDTA for 10-20 min.

Description

Pituitary growth hormone (GH) plays a crucial role in stimulating and controlling the growth, metabolism and differentiation of many mammalian cell types by modulating the synthesis of multiple mRNA species. These effects are mediated by the

binding of GH to its membrane-bound receptor, GHR, and involve a phosphorylation cascade that results in the modulation of numerous signaling pathways. GH is synthesized by acidophilic or somatotrophic cells of the anterior pituitary gland. Anti-GH is a useful marker in classification of pituitary tumors and the study of pituitary disease (acromegaly).

Application Notes

The concentration stated for each application is a general starting point. Variations in protocols, secondaries and substrates may require the Growth Hormone antibody to be titrated up or down for optimal performance.

Immunogen

A human partial recombinant protein corresponding to amino acids 58-187 was used as the immunogen for this Growth Hormone antibody.

Storage

Store the Growth Hormone antibody at 2-8°C (with azide) or aliquot and store at -20°C or colder (without azide).

References (1)