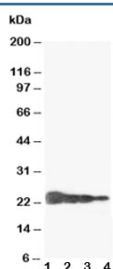


Growth Hormone Antibody (Human) (R30125)

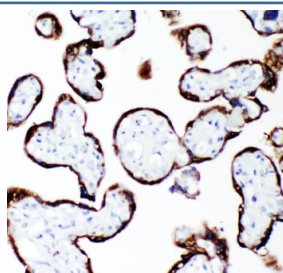
Catalog No.	Formulation	Size
R30125	0.5mg/ml if reconstituted with 0.2ml sterile DI water	100 ug

Bulk quote request

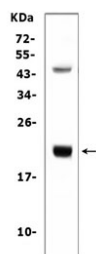
Availability	1-3 business days
Species Reactivity	Human
Format	Antigen affinity purified
Clonality	Polyclonal (rabbit origin)
Isotype	Rabbit IgG
Purity	Antigen affinity
Buffer	Lyophilized from 1X PBS with 0.025% sodium azide
UniProt	P01241
Applications	Western Blot : 0.5-1ug/ml IHC (FFPE) : 0.5-1ug/ml ELISA : 0.1-0.5ug/ml (human protein tested)
Limitations	This Growth Hormone antibody is available for research use only.



Western blot testing of Growth Hormone antibody and Lane 1: Recombinant human GH protein 10ng; 2: 5ng; 3: 2.5ng; 4: 1.25ng



IHC-P: Growth Hormone antibody testing of human placenta tissue



Western blot testing of human placental tissue with Growth Hormone antibody. Predicted molecular weight: 22-25 kDa.

Description

Growth hormone (GH) is mapped to 17q22-q24. GH is synthesized by acidophilic or somatotrophic cells of the anterior pituitary gland. Human Growth hormone has a molecular mass of 22,005 and contains 191 amino acid residues with 2 disulfide bridges. It binds two receptor molecules and thereby induces signal transduction through receptor dimerization. At high concentrations, GH acts as an antagonist because of a large difference in affinities at the respective binding sites.

Application Notes

The stated application concentrations are suggested starting points. Titration of the Growth Hormone antibody may be required due to differences in protocols and secondary/substrate sensitivity.

Immunogen

Human partial recombinant protein (AA 27-217) was used as the immunogen for this Growth Hormone antibody.

Storage

After reconstitution, the Growth Hormone antibody can be stored for up to one month at 4°C. For long-term, aliquot and store at -20°C. Avoid repeated freezing and thawing.