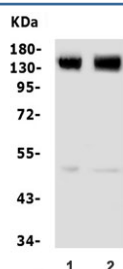


GRM5 Antibody / Glutamate Metabotropic Receptor 5 (RQ5580)

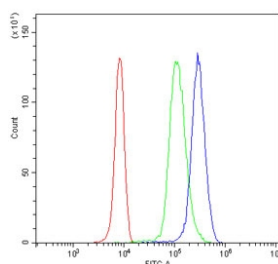
Catalog No.	Formulation	Size
RQ5580	0.5mg/ml if reconstituted with 0.2ml sterile DI water	100 ug

Bulk quote request

Availability	1-3 business days
Species Reactivity	Human, Mouse, Rat
Format	Antigen affinity purified
Clonality	Polyclonal (rabbit origin)
Isotype	Rabbit IgG
Purity	Affinity purified
Buffer	Lyophilized from 1X PBS with 2% Trehalose and 0.025% sodium azide
UniProt	P41594
Applications	Western Blot : 0.5-1ug/ml Flow Cytometry : 1-3ug/million cells Direct ELISA : 0.1-0.5ug/ml
Limitations	This GRM5 antibody is available for research use only.



Western blot testing of 1) rat brain and 2) mouse brain lysate with GRM5 antibody. Expected molecular weight: routinely observed at 125-150 kDa (monomer) and 250+ kDa (dimer).



Flow cytometry testing of human U937 cells with GRM5 antibody at 1ug/million cells (blocked with goat sera); Red=cells alone, Green=isotype control, Blue= GRM5 antibody.

Description

Metabotropic glutamate receptor 5 is a G protein-coupled receptor that in humans is encoded by the GRM5 gene. It is mapped to 11q14.2-q14.3. This gene encodes a member of the G-protein coupled receptor 3 protein family. The encoded protein is a metabotropic glutamate receptor, whose signaling activates a phosphatidylinositol-calcium second messenger system. This protein may be involved in the regulation of neural network activity and synaptic plasticity. Glutamatergic neurotransmission is involved in most aspects of normal brain function and can be perturbed in many neuropathologic conditions. A pseudogene of this gene has been defined on chromosome 11. Alternative splicing results in multiple transcript variants.

Application Notes

Optimal dilution of the GRM5 antibody should be determined by the researcher.

Immunogen

A human recombinant protein (amino acids E24-D560) was used as the immunogen for the GRM5 antibody.

Storage

After reconstitution, the GRM5 antibody can be stored for up to one month at 4°C. For long-term, aliquot and store at -20°C. Avoid repeated freezing and thawing.