

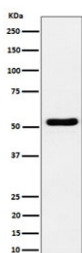
GPRC5B Antibody / G-protein coupled receptor family C group 5 member B [clone 29G58] (RQ8666)

Catalog No.	Formulation	Size
RQ8666	Antibody in PBS with 0.02% sodium azide, 50% glycerol and 0.4-0.5mg/ml BSA	100 ul

Recombinant **RABBIT MONOCLONAL**

[Bulk quote request](#)

Availability	1-3 days
Species Reactivity	Human
Format	Purified
Clonality	Recombinant Rabbit Monoclonal
Isotype	Rabbit IgG
Clone Name	29G58
Purity	Affinity chromatography
UniProt	Q9NZH0
Applications	Western Blot : 1:500-1:2000
Limitations	This GPRC5B antibody is available for research use only.



Western blot testing of human Jurkat cell lysate with GPRC5B antibody. Predicted molecular weight ~45 kDa but may be observed at higher molecular weights due to glycosylation.

Description

GPRC5B is a G-protein coupled receptor involved in cell volume regulation.

Application Notes

Optimal dilution of the GPRC5B antibody should be determined by the researcher.

Immunogen

A synthetic peptide specific to human GPRC5B protein was used as the immunogen for the GPRC5B Antibody.

Storage

Store the GPRC5B antibody at -20oC.