

GPC3 Antibody (F49601)

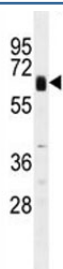
Catalog No.	Formulation	Size
F49601-0.4ML	In 1X PBS, pH 7.4, with 0.09% sodium azide	0.4 ml
F49601-0.08ML	In 1X PBS, pH 7.4, with 0.09% sodium azide	0.08 ml

[Bulk quote request](#)

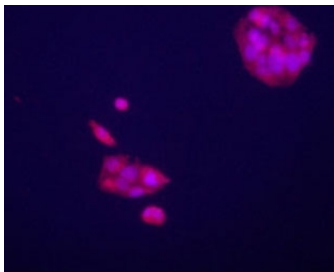
Availability	1-3 business days
Species Reactivity	Human, Mouse
Format	Purified
Clonality	Polyclonal (rabbit origin)
Isotype	Rabbit Ig
Purity	Purified
UniProt	P51654
Applications	Immunofluorescence : 1:10-1:50 Western Blot : 1:1000
Limitations	This GPC3 antibody is available for research use only.



GPC3 antibody western blot analysis in Jurkat lysate



GPC3 antibody western blot analysis in mouse lung tissue lysate



Immunofluorescence staining of GPC3 antibody on HepG2 cells. The cells were acetone fixated. Ab dilution of 1:50. Original magnification 1:400. (Data and protocol courtesy of Dr. Mariana Dabeva, Department of Medicine at Albert Einstein College of Medicine.)

Description

GPC3 is a cell surface proteoglycan that bears heparan sulfate. This protein may be involved in the suppression/modulation of growth in the predominantly mesodermal tissues and organs, and may play a role in the modulation of IGF2 interactions with its receptor and thereby modulate its function. Members of the glypican-related integral membrane proteoglycan family contain a core protein anchored to the cytoplasmic membrane via a glycosyl phosphatidylinositol (GPI) linkage. These proteins may play a role in the control of cell division, growth regulation, and tumor predisposition. Deletion mutations in GPC3 are the cause of Simpson-Golabi-Behmel syndrome (SGBS), also known as Simpson dysmorphia syndrome (SDYS). SGBS is a condition characterized by pre- and postnatal overgrowth (gigantism) with visceral and skeletal anomalies.

Application Notes

Titration of the GPC3 antibody may be required due to differences in protocols and secondary/substrate sensitivity.

Immunogen

A portion of amino acids 529-560 from the human protein was used as the immunogen for this GPC3 antibody.

Storage

Aliquot the GPC3 antibody and store frozen at -20°C or colder. Avoid repeated freeze-thaw cycles.