

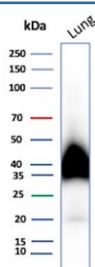
Gp36 Antibody / Glycoprotein 36 / Podoplanin [clone PDPN/7808R] (V4700)

Catalog No.	Formulation	Size
V4700-100UG	0.2 mg/ml in 1X PBS with 0.1 mg/ml BSA (US sourced), 0.05% sodium azide	100 ug
V4700-20UG	0.2 mg/ml in 1X PBS with 0.1 mg/ml BSA (US sourced), 0.05% sodium azide	20 ug
V4700SAF-100UG	1 mg/ml in 1X PBS; BSA free, sodium azide free	100 ug

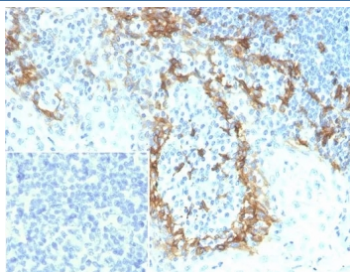
Recombinant **RABBIT MONOCLONAL**

[Bulk quote request](#)

Availability	1-3 business days
Species Reactivity	Human
Format	Purified
Clonality	Recombinant Rabbit Monoclonal
Isotype	Rabbit IgG, kappa
Clone Name	PDPN/7808R
Purity	Protein A/G affinity
UniProt	Q86YL7
Localization	Cell surface
Applications	ELISA (Order BSA-free Format For Coating) : Western Blot : 2-4ug/ml Immunohistochemistry (FFPE) : 1-2ug/ml for 30 min at RT
Limitations	This Gp36 antibody is available for research use only.



Western blot testing of human lung tissue lysate with Gp36 antibody. Predicted molecular weight ~25 kDa but may be observed at higher molecular weights due to glycosylation.



IHC staining of FFPE human tonsil tissue with Gp36 antibody (clone PDPN/7808R). Inset: PBS used in place of primary Ab (secondary Ab negative control). HIER: boil tissue sections in pH 9 10mM Tris with 1mM EDTA for 20 min and allow to cool before testing.

Description

It recognizes a muco-protein of 38-43kDa, which is identified as Podoplanin (PDPN), also called Glycoprotein 36 (Gp36). It localizes in stromal cells of peripheral lymphoid tissue and thymic epithelial cells. As a regulator of the lymphatic endothelium, podoplanin probably plays a role in maintaining the unique shape of podocytes. It is selectively expressed in lymphatic endothelium as well as lymphoangiomas, Kaposi sarcomas, and in a subset of angiosarcomas with probable lymphatic differentiation. Recent studies have also shown podoplanin to be a highly sensitive and relatively specific marker for epithelioid mesothelioma. Therefore, it can be used in a panel to distinguish mesotheliomas or mesothelial cells from pulmonary carcinomas.

Application Notes

Optimal dilution of the Gp36 antibody should be determined by the researcher.

Immunogen

A recombinant partial protein sequence (within amino acids 1-100) from the human protein was used as the immunogen for the Gp36 antibody.

Storage

Aliquot the Gp36 antibody and store frozen at -20oC or colder. Avoid repeated freeze-thaw cycles.