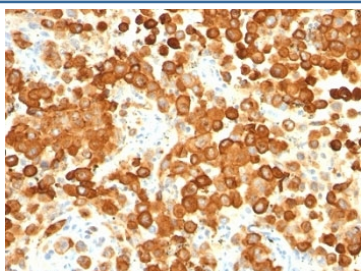


gp100 Antibody Cocktail / PMEL17 [clone HMB45 + PMEL/783] (V2857)

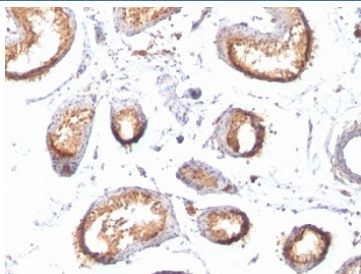
Catalog No.	Formulation	Size
V2857-100UG	0.2 mg/ml in 1X PBS with 0.1 mg/ml BSA (US sourced) and 0.05% sodium azide	100 ug
V2857-20UG	0.2 mg/ml in 1X PBS with 0.1 mg/ml BSA (US sourced) and 0.05% sodium azide	20 ug
V2857SAF-100UG	1 mg/ml in 1X PBS; BSA free, sodium azide free	100 ug
V2857IHC-7ML	Prediluted in 1X PBS with 0.1 mg/ml BSA (US sourced) and 0.05% sodium azide; *For IHC use only*	7 ml

[Bulk quote request](#)

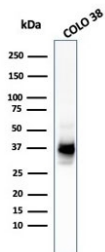
Availability	1-3 business days
Species Reactivity	Human
Format	Purified
Clonality	Monoclonal (mouse origin)
Isotype	Mouse IgG1, kappa
Clone Name	HMB45 + PMEL/783
Purity	Protein G affinity chromatography
UniProt	P40967
Localization	Cytoplasmic
Applications	Western Blot : 1-2ug/ml Immunohistochemistry (FFPE) : 0.5-1ug/ml for 30 min at RT (1)
Limitations	This gp100 antibody cocktail is available for research use only.



IHC: Formalin-fixed, paraffin-embedded human melanoma stained with gp100 antibody cocktail (HMB45 + PMEL/783). HIER: boil tissue sections in pH 9 10mM Tris with 1mM EDTA for 20 min and allow to cool before testing.



IHC: Formalin-fixed, paraffin-embedded human testis stained with gp100 antibody cocktail (HMB45 + PMEL/783). HIER: boil tissue sections in pH 9 10mM Tris with 1mM EDTA for 20 min and allow to cool before testing.



Western blot testing of human COLO-38 cell lysate with gp100 antibody cocktail (clones HMB45 + PMEL/783).

Description

Application Notes

Optimal dilution of the gp100 antibody cocktail should be determined by the researcher.

1. The prediluted format is supplied in a dropper bottle and is optimized for use in IHC. After epitope retrieval step (if required), drip mAb solution onto the tissue section and incubate at RT for 30 min.

Immunogen

Extract of pigmented melanoma metastases from lymph nodes (HMB45) and recombinant human protein (PMEL/783) were used as the immunogen for the gp100 antibody cocktail.

Storage

Store the gp100 antibody cocktail at 2-8°C (with azide) or aliquot and store at -20°C or colder (without azide).