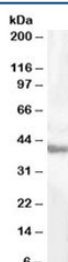


GOT1 Antibody (R36122)

Catalog No.	Formulation	Size
R36122-100UG	0.5 mg/ml in 1X TBS, pH7.3, with 0.5% BSA (US sourced) and 0.02% sodium azide	100 ug

[Bulk quote request](#)

Availability	1-3 business days
Species Reactivity	Human
Predicted Reactivity	Mouse
Format	Antigen affinity purified
Clonality	Polyclonal (goat origin)
Isotype	Goat Ig
Purity	Antigen affinity
Gene ID	2805
Applications	Western Blot : 0.5-2 ug/ml ELISA (peptide) LOD : 1:16000
Limitations	This GOT1 antibody is available for research use only.



Western blot testing of human liver lysate with GOT1 antibody at 0.5ug/ml. Predicted molecular weight 46kDa but routinely observed from 40~46kDa.

Description

Additional name(s) for this target protein: Glutamic-oxaloacetic transaminase 1

Application Notes

Optimal dilution of the GOT1 antibody should be determined by the researcher.

Immunogen

Amino acids TADFREDPDPRKVN were used as the immunogen for this GOT1 antibody.

Storage

Aliquot and store the GOT1 antibody at -20oC.