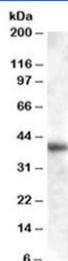


## GOT1 Antibody (R35783)

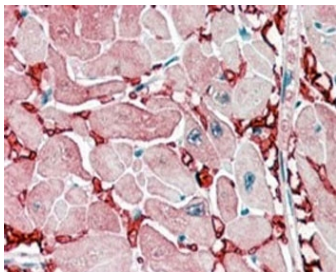
Catalog No.	Formulation	Size
R35783-100UG	0.5 mg/ml in 1X TBS, pH7.3, with 0.5% BSA (US sourced) and 0.02% sodium azide	100 ug

[Bulk quote request](#)

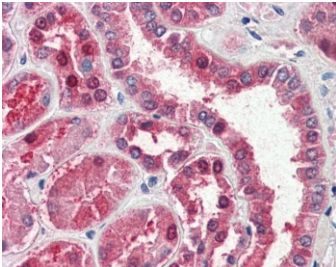
Availability	1-3 business days
Species Reactivity	Human
Predicted Reactivity	Rat
Format	Antigen affinity purified
Clonality	Polyclonal (goat origin)
Isotype	Goat Ig
Purity	Antigen affinity
Gene ID	2805
Localization	Cytoplasmic
Applications	Western Blot : 0.01-0.03ug/ml Immunohistochemistry (FFPE) : 2-5ug/ml ELISA (peptide) LOD : 1:4000
Limitations	This GOT1 antibody is available for research use only.



Western blot testing of human liver lysate with GOT1 antibody at 0.01ug/ml. Predicted molecular weight 46 kDa but routinely observed from 40~46 kDa.



IHC staining of FFPE human heart with GOT1 antibody at 2.5ug/ml. HIER: steamed with pH6 citrate buffer, AP-staining. Strong staining of the capillary network between the myocardial fibers is seen (transverse section).



IHC staining of FFPE human kidney with GOT1 antibody at 5ug/ml. HIER: steamed with pH6 citrate buffer, AP-staining.

## Description

Additional name(s) for this target protein: Glutamic-oxaloacetic transaminase 1

## Application Notes

Optimal dilution of the GOT1 antibody should be determined by the researcher.

## Immunogen

Amino acids RSYRYWDAEKR were used as the immunogen for this GOT1 antibody.

## Storage

Aliquot and store the GOT1 antibody at -20oC.