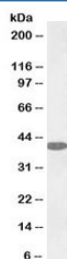


## GOT1 Antibody Biotin Conjugate (R35783BTN)

Catalog No.	Formulation	Size
R35783BTN	0.5 mg/ml in 1X TBS, pH7.3, with 0.5% BSA (US sourced) and 0.02% sodium azide	100 ug

[Bulk quote request](#)

Availability	1-3 business days
Species Reactivity	Human
Predicted Reactivity	Rat
Format	Biotin Conjugate
Clonality	Polyclonal (goat origin)
Isotype	Goat Ig
Purity	Antigen affinity
Gene ID	2805
Applications	Western Blot : 0.1-0.3ug/ml Immunohistochemistry (FFPE) : suitable ELISA (peptide) LOD : 1:4000
Limitations	This GOT1 antibody is available for research use only.



Western blot testing of human liver lysate with biotinylated GOT1 antibody at 0.1ug/ml.  
Predicted molecular weight 46 kDa but routinely observed from 40~46 kDa.

### Description

Additional name(s) for this target protein: Glutamic-oxaloacetic transaminase 1

### Application Notes

Optimal dilution of the GOT1 antibody should be determined by the researcher.

### Immunogen

Amino acids RSYRYWDAEKR were used as the immunogen for this GOT1 antibody.

## **Storage**

Aliquot and store the GOT1 antibody at -20oC.