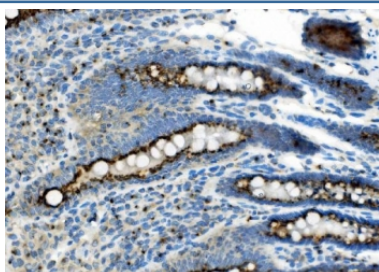


Golph2 Antibody / Golm1 (RQ6093)

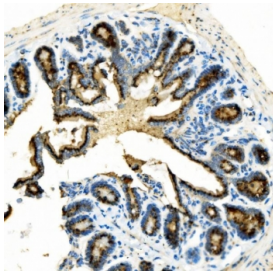
Catalog No.	Formulation	Size
RQ6093	0.5mg/ml if reconstituted with 0.2ml sterile DI water	100 ug

Bulk quote request

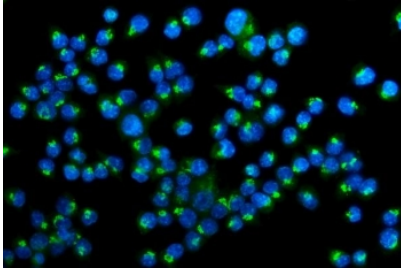
Availability	1-3 business days
Species Reactivity	Mouse, Rat
Format	Antigen affinity purified
Clonality	Polyclonal (rabbit origin)
Isotype	Rabbit IgG
Purity	Affinity purified
Buffer	Lyophilized from 1X PBS with 2% Trehalose and 0.025% sodium azide
UniProt	Q91XA2
Localization	Cytoplasmic
Applications	Western Blot : 1-2ug/ml Immunohistochemistry (FFPE) : 2-5ug/ml Flow Cytometry : 1-3ug/million cells Direct ELISA : 0.1-0.5ug/ml
Limitations	This Golph2 antibody is available for research use only.



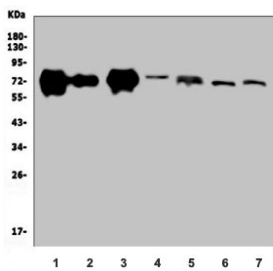
IHC staining of FFPE rat intestine with Golph2 antibody. HIER: boil tissue sections in pH8 EDTA for 20 min and allow to cool before testing.



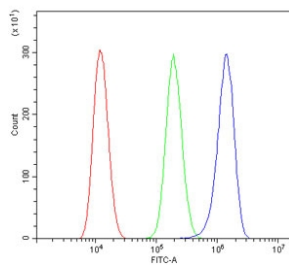
IHC staining of FFPE mouse intestine with Golph2 antibody. HIER: boil tissue sections in pH8 EDTA for 20 min and allow to cool before testing.



Immunofluorescent staining of FFPE mouse HEPA1-6 cells with Golph2 antibody (green) and DAPI nuclear stain (blue). HIER: steam section in pH6 citrate buffer for 20 min.



Western blot testing of 1) mouse stomach, 2) mouse lung, 3) mouse RAW264.7, 4) mouse Neuro-2a, 5) rat stomach, 6) rat lung and 7) rat liver lysate with Golph2 antibody. Predicted molecular weight ~73 kDa.



Flow cytometry testing of mouse HEPA1-6 cells with Golph2 antibody at 1ug/million cells (blocked with goat sera); Red=cells alone, Green=isotype control, Blue= Golph2 antibody.

Description

The Golgi complex plays a key role in the sorting and modification of proteins exported from the endoplasmic reticulum. The protein encoded by this gene is a type II Golgi transmembrane protein. It processes proteins synthesized in the rough endoplasmic reticulum and assists in the transport of protein cargo through the Golgi apparatus. The expression of this gene has been observed to be upregulated in response to viral infection. Alternatively spliced transcript variants encoding the same protein have been described for this gene.

Application Notes

Optimal dilution of the Golph2 antibody should be determined by the researcher.

Immunogen

A mouse recombinant partial protein (amino acids S37-A393) was used as the immunogen for the Golph2 antibody.

Storage

After reconstitution, the Golph2 antibody can be stored for up to one month at 4oC. For long-term, aliquot and store at -20oC. Avoid repeated freezing and thawing.

