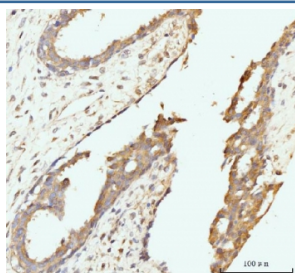


## Golgin 97 Antibody / GOLGA1 (RQ6639)

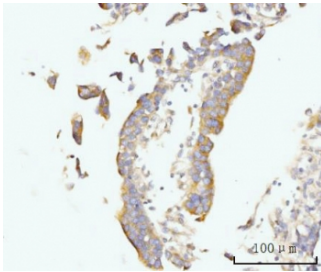
Catalog No.	Formulation	Size
RQ6639	0.5mg/ml if reconstituted with 0.2ml sterile DI water	100 ug

**Bulk quote request**

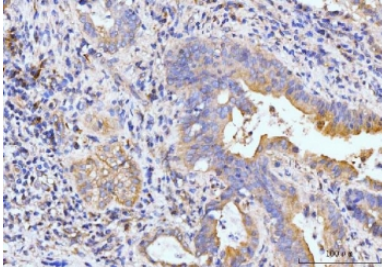
<b>Availability</b>	1-3 business days
<b>Species Reactivity</b>	Human, Mouse, Rat
<b>Format</b>	Antigen affinity purified
<b>Clonality</b>	Polyclonal (rabbit origin)
<b>Isotype</b>	Rabbit IgG
<b>Purity</b>	Antigen affinity purified
<b>Buffer</b>	Lyophilized from 1X PBS with 2% Trehalose
<b>UniProt</b>	Q92805
<b>Localization</b>	Cytoplasmic (Golgi)
<b>Applications</b>	Western Blot : 1-2ug/ml Immunohistochemistry (FFPE) : 2-5ug/ml Flow Cytometry : 1-3ug/million cells Immunofluorescence : 5ug/ml Direct ELISA : 0.1-0.5ug/ml
<b>Limitations</b>	This Golgin 97 antibody is available for research use only.



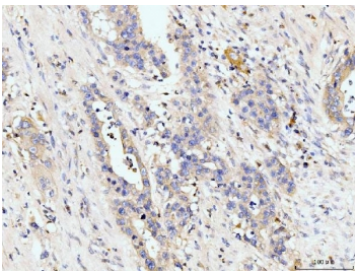
IHC staining of FFPE human breast cancer tissue with Golgin 97 antibody. HIER: boil tissue sections in pH8 EDTA for 20 min and allow to cool before testing.



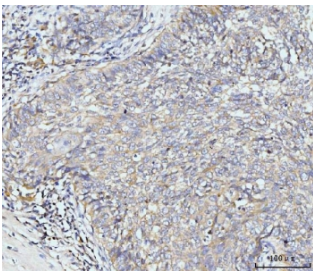
IHC staining of FFPE human colonic adenocarcinoma tissue with Golgin 97 antibody. HIER: boil tissue sections in pH8 EDTA for 20 min and allow to cool before testing.



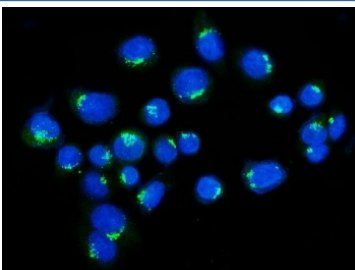
IHC staining of FFPE human gall bladder adenosquamous carcinoma tissue with Golgin 97 antibody. HIER: boil tissue sections in pH8 EDTA for 20 min and allow to cool before testing.



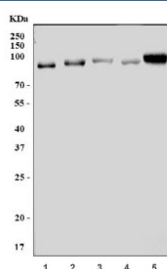
IHC staining of FFPE human appendiceal adenocarcinoma tissue with Golgin 97 antibody. HIER: boil tissue sections in pH8 EDTA for 20 min and allow to cool before testing.



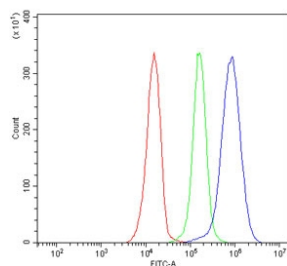
IHC staining of FFPE human lung cancer tissue with Golgin 97 antibody. HIER: boil tissue sections in pH8 EDTA for 20 min and allow to cool before testing.



Immunofluorescent staining of FFPE human SiHa cells with Golgin 97 antibody (green) and DAPI nuclear stain (blue). HIER: steam section in pH6 citrate buffer for 20 min.



Western blot testing of 1) human HepG2, 2) human T-47D, 3) human HACAT, 4) rat testis and 5) mouse testis tissue lysate with Golgin 97 antibody. Expected molecular weight: 88-97 kDa.



Flow cytometry testing of human JK-1 cells with Golgin 97 antibody at 1ug/million cells (blocked with goat sera); Red=cells alone, Green=isotype control, Blue= Golgin 97 antibody.

## Description

Golgin subfamily A member 1 is a protein that in humans is encoded by the GOLGA1 gene. The Golgi apparatus, which participates in glycosylation and transport of proteins and lipids in the secretory pathway, consists of a series of stacked cisternae (flattened membrane sacs). Interactions between the Golgi and microtubules are thought to be important for the reorganization of the Golgi after it fragments during mitosis. This gene encodes one of the golgins, a family of proteins localized to the Golgi. This encoded protein is associated with Sjogren's syndrome.

## Application Notes

Optimal dilution of the Golgin 97 antibody should be determined by the researcher.

## Immunogen

Recombinant human protein (amino acids M1-K752) was used as the immunogen for the Golgin 97 antibody.

## Storage

After reconstitution, the Golgin 97 antibody can be stored for up to one month at 4oC. For long-term, aliquot and store at -20oC. Avoid repeated freezing and thawing.