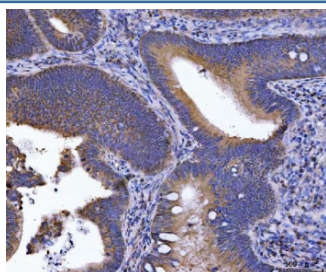


GOLGA3 Antibody / Golgin subfamily A member 3 (RQ7176)

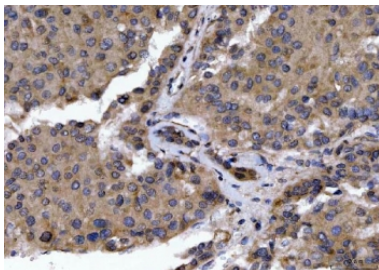
Catalog No.	Formulation	Size
RQ7176	0.5mg/ml if reconstituted with 0.2ml sterile DI water	100 ug

Bulk quote request

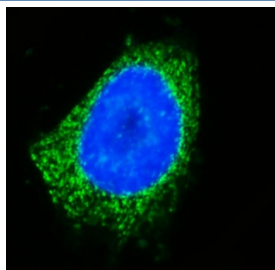
Availability	1-3 business days
Species Reactivity	Human
Format	Antigen affinity purified
Clonality	Polyclonal (rabbit origin)
Isotype	Rabbit IgG
Purity	Antigen affinity purified
Buffer	Lyophilized from 1X PBS with 2% Trehalose
UniProt	Q08378
Localization	Cytoplasmic
Applications	Western Blot : 0.5-1ug/ml Immunohistochemistry (FFPE) : 2-5ug/ml Immunofluorescence : 5ug/ml Direct ELISA : 0.1-0.5ug/ml
Limitations	This GOLGA3 antibody is available for research use only.



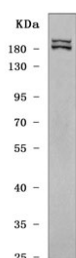
IHC staining of FFPE human rectal cancer tissue with GOLGA3 antibody. HIER: boil tissue sections in pH8 EDTA for 20 min and allow to cool before testing.



IHC staining of FFPE human liver cancer tissue with GOLGA3 antibody. HIER: boil tissue sections in pH8 EDTA for 20 min and allow to cool before testing.



Immunofluorescent staining of FFPE human Caco-2 cells with GOLGA3 antibody (green) and DAPI nuclear stain (blue). HIER: steam section in pH6 citrate buffer for 20 min.



Western blot testing of human HeLa cell lysate with GOLGA3 antibody. Predicted molecular weight 160~170 kDa.

Description

Golgin subfamily A member 3 is a protein that in humans is encoded by the GOLGA3 gene. The Golgi apparatus, which participates in glycosylation and transport of proteins and lipids in the secretory pathway, consists of a series of stacked cisternae (flattened membrane sacs). Interactions between the Golgi and microtubules are thought to be important for the reorganization of the Golgi after it fragments during mitosis. This gene encodes a member of the golgin family of proteins which are localized to the Golgi. Its encoded protein has been postulated to play a role in nuclear transport and Golgi apparatus localization. Several alternatively spliced transcript variants that encode different protein isoforms have been described for this gene.

Application Notes

Optimal dilution of the GOLGA3 antibody should be determined by the researcher.

Immunogen

Recombinant human protein (amino acids Q176-K1436) was used as the immunogen for the GOLGA3 antibody.

Storage

After reconstitution, the GOLGA3 antibody can be stored for up to one month at 4°C. For long-term, aliquot and store at -20°C. Avoid repeated freezing and thawing.

