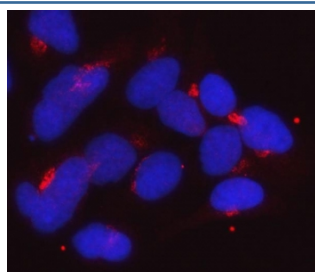


## GOLGA1 Antibody / Golgin 97 [clone 8E4H1] (RQ7680)

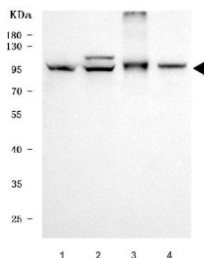
Catalog No.	Formulation	Size
RQ7680	0.5mg/ml if reconstituted with 0.2ml sterile DI water	100 ug

**Bulk quote request**

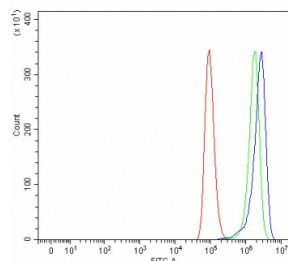
<b>Availability</b>	1-3 business days
<b>Species Reactivity</b>	Human
<b>Format</b>	Antigen affinity purified
<b>Clonality</b>	Monoclonal (mouse origin)
<b>Isotype</b>	Mouse IgG1
<b>Clone Name</b>	8E4H1
<b>Purity</b>	Antigen affinity purified
<b>Buffer</b>	Lyophilized from 1X PBS with 2% Trehalose
<b>UniProt</b>	Q92805
<b>Localization</b>	Cytoplasmic (Golgi)
<b>Applications</b>	Western Blot : 0.5-1ug/ml Immunofluorescence : 5ug/ml Flow Cytometry : 1-3ug/million cells
<b>Limitations</b>	This GOLGA1 antibody is available for research use only.



Immunofluorescent staining of FFPE human HeLa cells with GOLGA1 antibody (red) and DAPI nuclear stain (blue). HIER: steam section in pH6 citrate buffer for 20 min.



Western blot testing of human 1) U-87 MG, 2) HeLa, 3) PC-3 and 4) HepG2 cell lysate with GOLGA1 antibody. Expected molecular weight: 88-97 kDa.



Flow cytometry testing of human A549 cells with GOLGA1 antibody at 1ug/million cells (blocked with goat sera); Red=cells alone, Green=isotype control, Blue= GOLGA1 antibody.

## Description

Golgin subfamily A member 1 is a protein that in humans is encoded by the GOLGA1 gene. The Golgi apparatus, which participates in glycosylation and transport of proteins and lipids in the secretory pathway, consists of a series of stacked cisternae (flattened membrane sacs). Interactions between the Golgi and microtubules are thought to be important for the reorganization of the Golgi after it fragments during mitosis. This gene encodes one of the golgins, a family of proteins localized to the Golgi. This encoded protein is associated with Sjogren's syndrome.

## Application Notes

Optimal dilution of the GOLGA1 antibody should be determined by the researcher.

## Immunogen

E. coli-derived recombinant human protein (amino acids M1-K752) was used as the immunogen for the GOLGA1 antibody.

## Storage

After reconstitution, the GOLGA1 antibody can be stored for up to one month at 4oC. For long-term, aliquot and store at -20oC. Avoid repeated freezing and thawing.