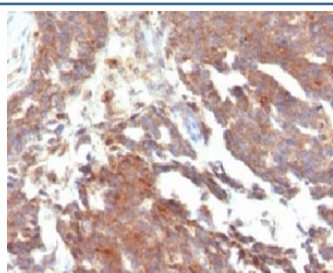


GnRHR Antibody [clone LCHR37] (V7098)

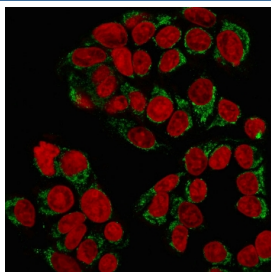
Catalog No.	Formulation	Size
V7098-100UG	0.2 mg/ml in 1X PBS with 0.1 mg/ml BSA (US sourced) and 0.05% sodium azide	100 ug
V7098-20UG	0.2 mg/ml in 1X PBS with 0.1 mg/ml BSA (US sourced) and 0.05% sodium azide	20 ug
V7098SAF-100UG	1 mg/ml in 1X PBS; BSA free, sodium azide free	100 ug
V7098IHC-7ML	Prediluted in 1X PBS with 0.1 mg/ml BSA (US sourced) and 0.05% sodium azide; *For IHC use only*	7 ml

Bulk quote request

Availability	1-3 business days
Species Reactivity	Human
Format	Purified
Clonality	Monoclonal (mouse origin)
Isotype	Mouse IgG1, kappa
Clone Name	LCHR37
Purity	Protein G affinity chromatography
UniProt	P30968
Localization	Cytoplasmic
Applications	Immunofluorescence : 1-2ug/ml Immunohistochemistry (FFPE) : 1-2ug/ml for 30 min at RT (1) Prediluted IHC Only Format : incubate for 30 min at RT (2)
Limitations	This GnRHR antibody is available for research use only.



IHC testing of FFPE human ovarian carcinoma and GnRHR antibody (clone LCHR37). Staining of formalin-fixed tissues requires boiling tissue sections in 10mM Tris with 1mM EDTA, pH 9, for 10-20 min followed by cooling at RT for 20 min.



Immunofluorescent staining of MeOH-fixed human MCF7 cells with GnRHR antibody (green) and Reddot nuclear stain (red).

Description

Receptor for gonadotropin releasing hormone (GnRH) that mediates the action of GnRH to stimulate the secretion of the gonadotropic hormones luteinizing hormone (LH) and follicle-stimulating hormone (FSH). This receptor mediates its action by association with G-proteins that activate a phosphatidylinositol-calcium second messenger system. [UniProt]

Application Notes

Optimal dilution of the GnRHR antibody should be determined by the researcher.

1. The prediluted format is supplied in a dropper bottle and is optimized for use in IHC. After epitope retrieval step (if required), drip mAb solution onto the tissue section and incubate at RT for 30 min.

Immunogen

Recombinant full-length human protein was used as the immunogen for the GnRHR antibody.

Storage

Store the GnRHR antibody at 2-8°C (with azide) or aliquot and store at -20°C or colder (without azide).