

## GMCSF Antibody (R31436)

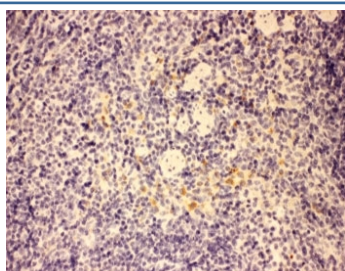
Catalog No.	Formulation	Size
R31436	0.5mg/ml if reconstituted with 0.2ml sterile DI water	100 ug

**Bulk quote request**

<b>Availability</b>	1-3 business days
<b>Species Reactivity</b>	Mouse
<b>Format</b>	Antigen affinity purified
<b>Clonality</b>	Polyclonal (rabbit origin)
<b>Isotype</b>	Rabbit IgG
<b>Purity</b>	Antigen affinity
<b>Buffer</b>	Lyophilized from 1X PBS with 2% Trehalose and 0.005% sodium azide
<b>UniProt</b>	P01587
<b>Applications</b>	Western Blot : 0.5-1ug/ml IHC (FFPE) : 0.5-1ug/ml
<b>Limitations</b>	This GMCSF antibody is available for research use only.



Western blot testing of GMCSF antibody and recombinant mouse protein ( 0.5ng)



IHC-P: GMCSF antibody testing of mouse spleen tissue. HIER: steamed with pH6 citrate buffer.

## Description

Granulocyte-macrophage colony-stimulating factor is a protein secreted by macrophages, T cells, mast cells, endothelial cells, and fibroblasts. It stimulates stem cells to produce granulocytes and monocytes and is an essential regulator of neutrophil function.

## Application Notes

The stated application concentrations are suggested starting amounts. Titration of the GM-CSF antibody may be required due to differences in protocols and secondary/substrate sensitivity.

## Immunogen

Mouse partial recombinant protein (AA 18-141) was used as the immunogen for this GMCSF antibody.

## Storage

After reconstitution, the GMCSF antibody can be stored for up to one month at 4oC. For long-term, aliquot and store at -20oC. Avoid repeated freezing and thawing.