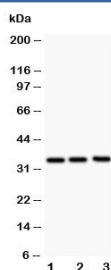


## GM-CSF Antibody (R30528)

Catalog No.	Formulation	Size
R30528	0.5mg/ml if reconstituted with 0.2ml sterile DI water	100 ug

**Bulk quote request**

<b>Availability</b>	1-3 business days
<b>Species Reactivity</b>	Human
<b>Format</b>	Antigen affinity purified
<b>Clonality</b>	Polyclonal (rabbit origin)
<b>Isotype</b>	Rabbit IgG
<b>Purity</b>	Antigen affinity
<b>Buffer</b>	Lyophilized from 1X PBS with 2.5% BSA and 0.025% sodium azide/thimerosal
<b>UniProt</b>	P04141
<b>Applications</b>	Western Blot : 0.5-1ug/ml
<b>Limitations</b>	This GM-CSF antibody is available for research use only.



Western blot testing of GM-CSF antibody and Lane 1: Jurkat; 2: HeLa; 3: HT1080; The protein is visualized between 14~35KD depending on glycosylation.

## Description

Granulocyte-macrophage colony-stimulating factor is a protein secreted by macrophages, T cells, mast cells, endothelial cells, and fibroblasts. By fluorescence in situ hybridization, the gene is mapped to 5q31.1. GM-CSF is a cytokine that functions as a white blood cell growth factor. It stimulates stem cells to produce granulocytes(neutrophils, eosinophils, and basophils) and monocytes. GM-CSF is an essential regulator of neutrophil function.

## Application Notes

The stated application concentrations are suggested starting amounts. Titration of the GM-CSF antibody may be required due to differences in protocols and secondary/substrate sensitivity.

## Immunogen

An amino acid sequence from the middle region of human GM-CSF (MFDLQEPTCLQTRLELYKQ) was used as the immunogen for this GM-CSF antibody.

## Storage

After reconstitution, the GM-CSF antibody can be stored for up to one month at 4oC. For long-term, aliquot and store at -20oC. Avoid repeated freezing and thawing.