

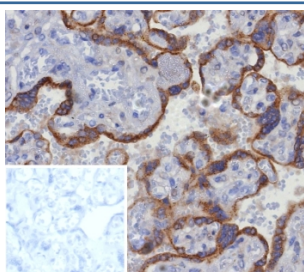
## Glypican-3 Antibody / GPC3 [clone GPC3/8363R] (V5350)

Catalog No.	Formulation	Size
V5350-100UG	0.2 mg/ml in 1X PBS with 0.1 mg/ml BSA (US sourced), 0.05% sodium azide	100 ug
V5350-20UG	0.2 mg/ml in 1X PBS with 0.1 mg/ml BSA (US sourced), 0.05% sodium azide	20 ug
V5350SAF-100UG	1 mg/ml in 1X PBS; BSA free, sodium azide free	100 ug

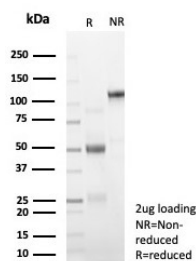
Recombinant **RABBIT MONOCLONAL**

[Bulk quote request](#)

<b>Availability</b>	1-3 business days
<b>Species Reactivity</b>	Human
<b>Format</b>	Purified
<b>Clonality</b>	Recombinant Rabbit Monoclonal
<b>Isotype</b>	Rabbit IgG, kappa
<b>Clone Name</b>	GPC3/8363R
<b>Purity</b>	Protein A affinity
<b>UniProt</b>	P51654
<b>Localization</b>	Cytoplasm
<b>Applications</b>	Immunohistochemistry (FFPE) : 1-2ug/ml for 30 min at RT
<b>Limitations</b>	This Glypican-3 antibody is available for research use only.



IHC staining of FFPE human placental tissue with Glypican-3 antibody (clone GPC3/8363R). Inset: PBS used in place of primary Ab (secondary Ab negative control).  
 HIHER: boil tissue sections in pH 9 10mM Tris with 1mM EDTA for 20 min and allow to cool before testing.



SDS-PAGE analysis of purified, BSA-free GPC3 antibody (clone GPC3/8363R) as confirmation of integrity and purity.

## Description

Glypican-3 (GPC3) is a glycosylphosphatidyl inositol-anchored membrane protein, which may also be found in a secreted form.

## Application Notes

Optimal dilution of the Glypican-3 antibody should be determined by the researcher.

## Immunogen

A recombinant partial protein sequence (within amino acids 400-550) from the human protein was used as the immunogen for the Glypican-3 antibody.

## Storage

Aliquot the Glypican-3 antibody and store frozen at -20oC or colder. Avoid repeated freeze-thaw cycles.