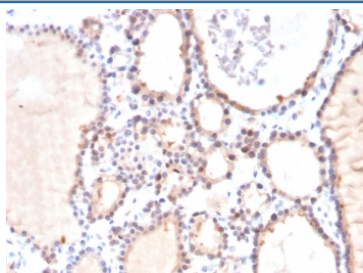


Glyoxalase 1 Antibody / GLO1 [clone CPTC-GLO1-3] (V7812)

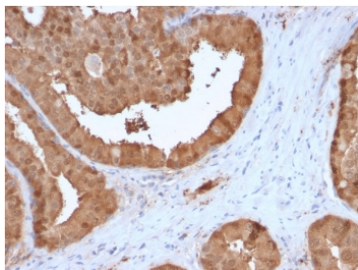
Catalog No.	Formulation	Size
V7812-100UG	0.2 mg/ml in 1X PBS with 0.1 mg/ml BSA (US sourced) and 0.05% sodium azide	100 ug
V7812-20UG	0.2 mg/ml in 1X PBS with 0.1 mg/ml BSA (US sourced) and 0.05% sodium azide	20 ug
V7812SAF-100UG	1 mg/ml in 1X PBS; BSA free, sodium azide free	100 ug

Bulk quote request

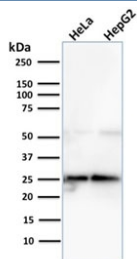
Availability	1-3 business days
Species Reactivity	Human
Format	Purified
Clonality	Monoclonal (mouse origin)
Isotype	Mouse IgG1, kappa
Clone Name	CPTC-GLO1-3
Purity	Protein G affinity chromatography
UniProt	Q04760
Localization	Cytoplasmic
Applications	Western Blot : 1-2ug/ml Immunohistochemistry (FFPE) : 1-2ug/ml
Limitations	This Glyoxalase 1 antibody is available for research use only.



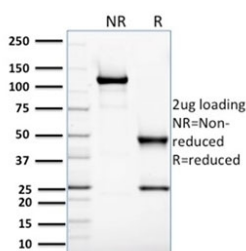
IHC testing of FFPE human thyroid carcinoma stained with Glyoxalase 1 antibody (clone CPTC-GLO1-3). Required HIER: boiling tissue sections in pH 9 10mM Tris with 1mM EDTA for 10-20 min followed by cooling at RT for 20 min.



IHC testing of FFPE human prostate carcinoma stained with Glyoxalase 1 antibody (clone CPTC-GLO1-3). Required HIER: boiling tissue sections in pH 9 10mM Tris with 1mM EDTA for 10-20 min followed by cooling at RT for 20 min.



Western blot testing of human HeLa and HepG2 cell lysate with Glyoxalase 1 antibody (clone CPTC-GLO1-3). Predicted molecular weight ~21 kDa.



SDS-PAGE analysis of purified, BSA-free Glyoxalase 1 antibody (clone CPTC-GLO1-3) as confirmation of integrity and purity.

Description

GLO1 is an enzyme involved in the detoxification of methylglyoxal, a byproduct of glycolysis. GLO1 expression has been demonstrated by several studies to be upregulated in various human malignant tumors, including metastatic melanoma and lung carcinoma, and thus is a target for pharmaceutical development.

Application Notes

Optimal dilution of the Glyoxalase 1 antibody should be determined by the researcher.

Immunogen

Full length human recombinant protein was used as the immunogen for the Glyoxalase 1 antibody.

Storage

Store the Glyoxalase 1 antibody at 2-8°C (with azide) or aliquot and store at -20°C or colder (without azide).