

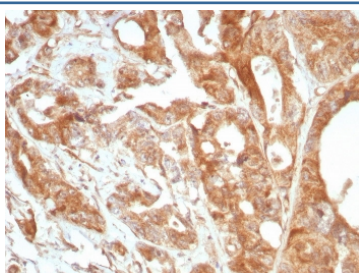
## Glycoprotein 36 Antibody / Gp36 / Podoplanin [clone PDPN/8875R] (V4701)

Catalog No.	Formulation	Size
V4701-100UG	0.2 mg/ml in 1X PBS with 0.1 mg/ml BSA (US sourced), 0.05% sodium azide	100 ug
V4701-20UG	0.2 mg/ml in 1X PBS with 0.1 mg/ml BSA (US sourced), 0.05% sodium azide	20 ug
V4701SAF-100UG	1 mg/ml in 1X PBS; BSA free, sodium azide free	100 ug

Recombinant **RABBIT MONOCLONAL**

[Bulk quote request](#)

<b>Availability</b>	1-3 business days
<b>Species Reactivity</b>	Human
<b>Format</b>	Purified
<b>Clonality</b>	Recombinant Rabbit Monoclonal
<b>Isotype</b>	Rabbit IgG, kappa
<b>Clone Name</b>	PDPN/8875R
<b>Purity</b>	Protein A/G affinity
<b>UniProt</b>	Q86YL7
<b>Localization</b>	Cell surface
<b>Applications</b>	ELISA (Order BSA-free Format For Coating) : Immunofluorescence : 1-2ug/ml Immunohistochemistry (FFPE) : 1-2ug/ml for 30 min at RT
<b>Limitations</b>	This Glycoprotein 36 antibody is available for research use only.



IHC staining of FFPE human prostate tissue with Glycoprotein 36 antibody (clone PDPN/8875R). HIER: boil tissue sections in pH 9 10mM Tris with 1mM EDTA for 20 min and allow to cool before testing.



SDS-PAGE analysis of purified, BSA-free Glycoprotein 36 antibody (clone PDPN/8875R) as confirmation of integrity and purity.

## Description

It recognizes a muco-protein of 38-43kDa, which is identified as Podoplanin (PDPN), also called Glycoprotein 36 (Gp36). It localizes in stromal cells of peripheral lymphoid tissue and thymic epithelial cells. As a regulator of the lymphatic endothelium, podoplanin probably plays a role in maintaining the unique shape of podocytes. It is selectively expressed in lymphatic endothelium as well as lymphoangiomas, Kaposi sarcomas, and in a subset of angiosarcomas with probable lymphatic differentiation. Recent studies have also shown podoplanin to be a highly sensitive and relatively specific marker for epithelioid mesothelioma. Therefore, it can be used in a panel to distinguish mesotheliomas or mesothelial cells from pulmonary carcinomas.

## Application Notes

Optimal dilution of the Glycoprotein 36 antibody should be determined by the researcher.

## Immunogen

A recombinant partial protein sequence (within amino acids 1-150) from the human protein was used as the immunogen for the Glycoprotein 36 antibody.

## Storage

Aliquot the Glycoprotein 36 antibody and store frozen at -20oC or colder. Avoid repeated freeze-thaw cycles.