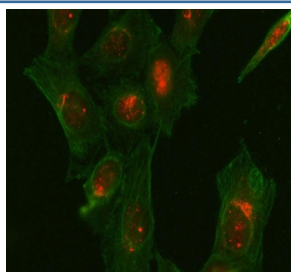


Glycogen synthase kinase-3 beta Antibody / GSK3B (RQ7291)

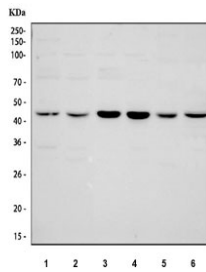
Catalog No.	Formulation	Size
RQ7291	0.5mg/ml if reconstituted with 0.2ml sterile DI water	100 ug

Bulk quote request

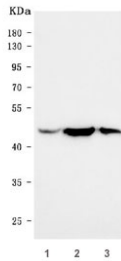
Availability	1-3 business days
Species Reactivity	Human
Format	Antigen affinity purified
Clonality	Polyclonal (rabbit origin)
Isotype	Rabbit IgG
Purity	Antigen affinity purified
Buffer	Lyophilized from 1X PBS with 2% Trehalose
UniProt	P49841
Localization	Cytoplasmic, nuclear, cell membrane
Applications	Western Blot : 0.5-1ug/ml Immunohistochemistry (FFPE) : 2-5ug/ml Immunofluorescence : 5ug/ml Direct ELISA : 0.1-0.5ug/ml
Limitations	This Glycogen synthase kinase-3 beta antibody is available for research use only.



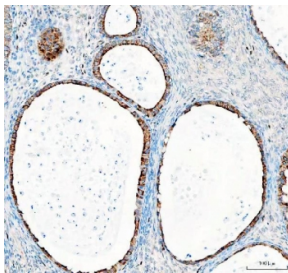
Immunofluorescent staining of FFPE human U-2 OS cells with Glycogen synthase kinase-3 beta antibody (red) and Beta Tubulin mAb (green). HIER: steam section in pH6 citrate buffer for 20 min.



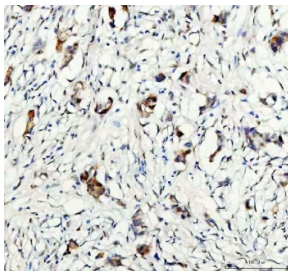
Western blot testing of 1) human HeLa, 2) human U-87 MG, 3) rat PC-12, 4) rat C6, 5) mouse RAW264.7 and 6) mouse NIH 3T3 cell lysate with Glycogen synthase kinase-3 beta antibody. Predicted molecular weight ~46 kDa.



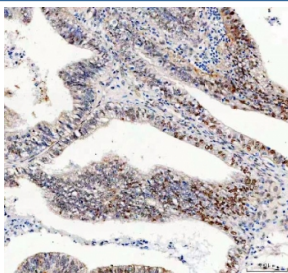
Western blot testing of human 1) U-87 MG, 2) HeLa and 3) A431 cell lysate with Glycogen synthase kinase-3 beta antibody. Predicted molecular weight ~46 kDa.



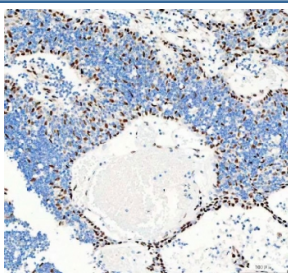
IHC staining of FFPE human ovarian cancer tissue with Glycogen synthase kinase-3 beta antibody. HIER: boil tissue sections in pH8 EDTA for 20 min and allow to cool before testing.



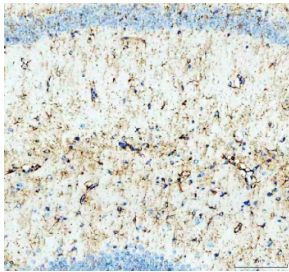
IHC staining of FFPE human breast cancer tissue with Glycogen synthase kinase-3 beta antibody. HIER: boil tissue sections in pH8 EDTA for 20 min and allow to cool before testing.



IHC staining of FFPE human endometrial adenocarcinoma tissue with Glycogen synthase kinase-3 beta antibody. HIER: boil tissue sections in pH8 EDTA for 20 min and allow to cool before testing.



IHC staining of FFPE human spleen tissue with Glycogen synthase kinase-3 beta antibody. HIER: boil tissue sections in pH8 EDTA for 20 min and allow to cool before testing.



IHC staining of FFPE mouse brain tissue with Glycogen synthase kinase-3 beta antibody. HIER: boil tissue sections in pH8 EDTA for 20 min and allow to cool before testing.



IHC staining of FFPE rat brain tissue with Glycogen synthase kinase-3 beta antibody. HIER: boil tissue sections in pH8 EDTA for 20 min and allow to cool before testing.

Description

Glycogen synthase kinase-3 beta, (GSK-3 beta), is an enzyme that in humans is encoded by the GSK3B gene. The protein encoded by this gene is a serine-threonine kinase belonging to the glycogen synthase kinase subfamily. It is a negative regulator of glucose homeostasis and is involved in energy metabolism, inflammation, ER-stress, mitochondrial dysfunction, and apoptotic pathways. Defects in this gene have been associated with Parkinson disease and Alzheimer disease.

Application Notes

Optimal dilution of the Glycogen synthase kinase-3 beta antibody should be determined by the researcher.

Immunogen

Recombinant human protein (amino acids M1-T420) was used as the immunogen for the Glycogen synthase kinase-3 beta antibody.

Storage

After reconstitution, the Glycogen synthase kinase-3 beta antibody can be stored for up to one month at 4oC. For long-term, aliquot and store at -20oC. Avoid repeated freezing and thawing.