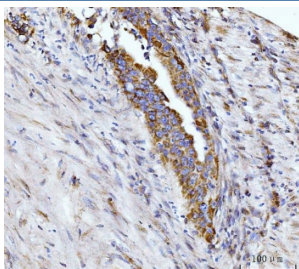


Glutaminase Antibody / GLS [clone 9G6] (RQ6733)

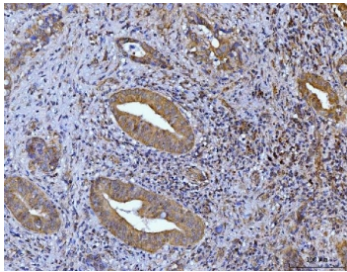
Catalog No.	Formulation	Size
RQ6733	0.5mg/ml if reconstituted with 0.2ml sterile DI water	100 ug

Bulk quote request

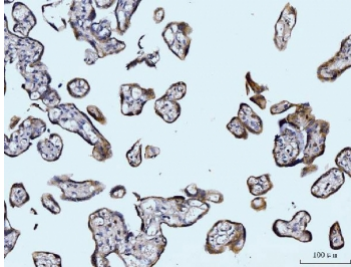
Availability	1-3 business days
Species Reactivity	Human, Mouse, Rat
Format	Purified
Clonality	Monoclonal (mouse origin)
Isotype	Mouse IgG2b
Clone Name	9G6
Purity	Affinity purified
Buffer	Lyophilized from 1X PBS with 2% Trehalose
UniProt	O94925
Localization	Cytoplasmic
Applications	Western Blot : 1-2ug/ml Immunohistochemistry (FFPE) : 2-5ug/ml Immunofluorescence (FFPE) : 5ug/ml
Limitations	This Glutaminase antibody is available for research use only.



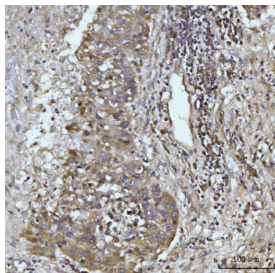
IHC staining of FFPE human appendiceal adenocarcinoma tissue with Glutaminase antibody. HIER: boil tissue sections in pH8 EDTA for 20 min and allow to cool before testing.



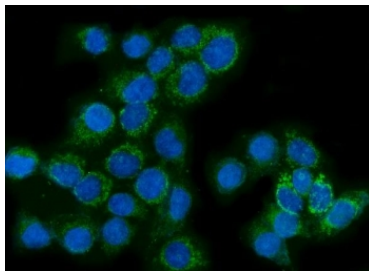
IHC staining of FFPE human gall bladder adenosquamous carcinoma tissue with Glutaminase antibody. HIER: boil tissue sections in pH8 EDTA for 20 min and allow to cool before testing.



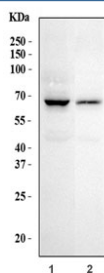
IHC staining of FFPE human placental tissue with Glutaminase antibody. HIER: boil tissue sections in pH8 EDTA for 20 min and allow to cool before testing.



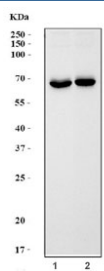
IHC staining of FFPE human liver cancer tissue with Glutaminase antibody. HIER: boil tissue sections in pH8 EDTA for 20 min and allow to cool before testing.



Immunofluorescent staining of FFPE human SiHa cells with Glutaminase antibody (green) and DAPI nuclear stain (blue). HIER: steam section in pH6 citrate buffer for 20 min.



Western blot testing of human 1) HepG2 and 2) HEL cell lysate with Glutaminase antibody. Predicted molecular weigh: 65-73 kDa.



Western blot testing of 1) rat brain and 2) mouse brain tissue lysate with Glutaminase antibody. Predicted molecular weigh: 65-73 kDa.

Description

This gene encodes the K-type mitochondrial glutaminase. The encoded protein is an phosphate-activated amidohydrolase that catalyzes the hydrolysis of glutamine to glutamate and ammonia. This protein is primarily expressed in the brain and kidney plays an essential role in generating energy for metabolism, synthesizing the brain neurotransmitter glutamate and maintaining acid-base balance in the kidney. Alternate splicing results in multiple transcript variants.

Application Notes

Optimal dilution of the Glutaminase antibody should be determined by the researcher.

Immunogen

Recombinant human protein (amino acids K396-N654) was used as the immunogen for the Glutaminase antibody.

Storage

After reconstitution, the Glutaminase antibody can be stored for up to one month at 4°C. For long-term, aliquot and store at -20°C. Avoid repeated freezing and thawing.