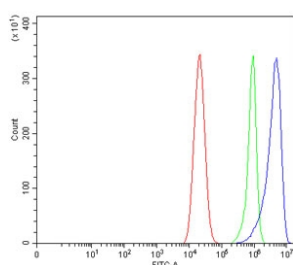


## Glutaminase 2 Antibody / GLS2 (RQ6878)

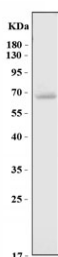
Catalog No.	Formulation	Size
RQ6878	0.5mg/ml if reconstituted with 0.2ml sterile DI water	100 ug

**Bulk quote request**

<b>Availability</b>	1-3 business days
<b>Species Reactivity</b>	Human
<b>Format</b>	Antigen affinity purified
<b>Clonality</b>	Polyclonal (rabbit origin)
<b>Isotype</b>	Rabbit IgG
<b>Purity</b>	Antigen affinity purified
<b>Buffer</b>	Lyophilized from 1X PBS with 2% Trehalose
<b>UniProt</b>	Q9UI32
<b>Applications</b>	Western Blot : 1-2ug/ml Flow Cytometry : 1-3ug/million cells Direct ELISA : 0.1-0.5ug/ml
<b>Limitations</b>	This Glutaminase 2 antibody is available for research use only.



Flow cytometry testing of human Caco-2 cells with Glutaminase 2 antibody at 1ug/million cells (blocked with goat sera); Red=cells alone, Green=isotype control, Blue= Glutaminase 2 antibody.



Western blot testing of U-87 MG cell lysate with Glutaminase 2 antibody. Predicted molecular weight ~66 kDa.

## Description

Glutaminase 2 (liver, mitochondrial) is a protein that in humans is encoded by the GLS2 gene. The protein encoded by this gene is a mitochondrial phosphate-activated glutaminase that catalyzes the hydrolysis of glutamine to stoichiometric amounts of glutamate and ammonia. Originally thought to be liver-specific, this protein has been found in other tissues as well. Alternative splicing results in multiple transcript variants that encode different isoforms.

## Application Notes

Optimal dilution of the Glutaminase 2 antibody should be determined by the researcher.

## Immunogen

Recombinant human protein (amino acids M1-V602) was used as the immunogen for the Glutaminase 2 antibody.

## Storage

After reconstitution, the Glutaminase 2 antibody can be stored for up to one month at 4°C. For long-term, aliquot and store at -20°C. Avoid repeated freezing and thawing.