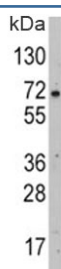


## GLUT2 Antibody / SLC2A2 (F44273)

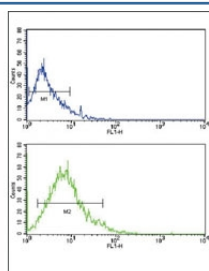
Catalog No.	Formulation	Size
F44273-0.4ML	In 1X PBS, pH 7.4, with 0.09% sodium azide	0.4 ml
F44273-0.08ML	In 1X PBS, pH 7.4, with 0.09% sodium azide	0.08 ml

**Bulk quote request**

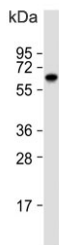
<b>Availability</b>	1-3 business days
<b>Species Reactivity</b>	Human
<b>Format</b>	Purified
<b>Clonality</b>	Polyclonal (rabbit origin)
<b>Isotype</b>	Rabbit Ig
<b>Purity</b>	Purified
<b>UniProt</b>	P11168
<b>Applications</b>	Western Blot : 1:1000 Flow Cytometry : 1:10-1:50
<b>Limitations</b>	This GLUT2 antibody is available for research use only.



Western blot analysis of GLUT2 antibody and HepG2 lysate. Expected molecular weight: 57~70 kDa depending on glycosylation level.



Flow cytometric analysis of HL-60 cells using GLUT2 antibody (bottom histogram) compared to a [negative control](#) (top histogram). FITC-conjugated goat-anti-rabbit secondary Ab was used for the analysis.



Western blot analysis of GLUT2 antibody and human Jurkat cell lysate. Expected molecular weight: 57~70 kDa depending on glycosylation level.

## Description

Glucose transporter 2 isoform is an integral plasma membrane glycoprotein of the liver, islet beta cells, intestine, and kidney epithelium. It mediates facilitated bidirectional glucose transport. Because of its low affinity for glucose, it has been suggested as a glucose sensor.

## Application Notes

Titration of the GLUT2 antibody may be required due to differences in protocols and secondary/substrate sensitivity.

## Immunogen

A portion of amino acids 31-60 from the human protein was used as the immunogen for this GLUT2 antibody.

## Storage

Aliquot the GLUT2 antibody and store frozen at -20°C or colder. Avoid repeated freeze-thaw cycles.