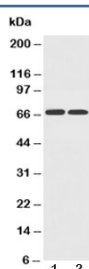


## GLUT12 Antibody (R31288)

Catalog No.	Formulation	Size
R31288	0.5mg/ml if reconstituted with 0.2ml sterile DI water	100 ug

**Bulk quote request**

<b>Availability</b>	1-3 business days
<b>Species Reactivity</b>	Human, Mouse, Rat
<b>Format</b>	Antigen affinity purified
<b>Clonality</b>	Polyclonal (rabbit origin)
<b>Isotype</b>	Rabbit IgG
<b>Purity</b>	Antigen affinity
<b>Buffer</b>	Lyophilized from 1X PBS with 2.5% BSA and 0.025% sodium azide/thimerosal
<b>UniProt</b>	Q8TD20
<b>Applications</b>	Western Blot : 0.5-1ug/ml
<b>Limitations</b>	This GLUT12 antibody is available for research use only.



Western blot testing of GLUT12 antibody and Lane 1: PC-12; 2: A549 cell lysate

## Description

GLUT12, also called Solute carrier family 2, facilitated glucose transporter member 12, is a protein that in humans is encoded by the SLC2A12 gene. It belongs to a family of transporters that catalyze the uptake of sugars through facilitated diffusion. This family of transporters shows conservation of 12 transmembrane helices as well as functionally significant amino acid residues. By genomic sequence analysis, this gene is mapped to chromosome 6q23.2. GLUT12 was detected in a perinuclear location in MCF7 cells in the absence of insulin; however, it redistributed to the plasma membrane of MCF7 cells grown continuously in the presence of insulin.

## Application Notes

The stated application concentrations are suggested starting points. Titration of the GLUT12 antibody may be required due to differences in protocols and secondary/substrate sensitivity.

### **Immunogen**

Amino acids 256-272 (SLKDEYQYSFWDLFRSK) were used as the immunogen for this GLUT12 antibody (100% homologous in human, mouse and rat).

### **Storage**

After reconstitution, the GLUT12 antibody can be stored for up to one month at 4°C. For long-term, aliquot and store at -20°C. Avoid repeated freezing and thawing.