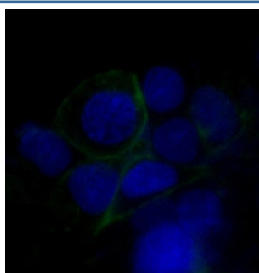


GLUT1 Antibody / SLC2A1 [clone CGG-19] (RQ5352)

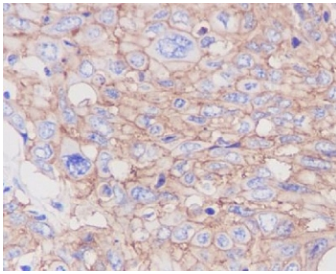
Catalog No.	Formulation	Size
RQ5352	Antibody in PBS with 0.02% sodium azide, 50% glycerol and 0.4-0.5mg/ml BSA	100 ul

[Bulk quote request](#)

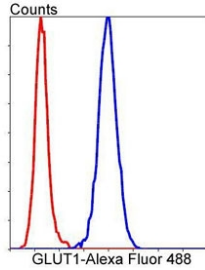
Availability	1-2 weeks
Species Reactivity	Human
Format	Purified
Clonality	Rabbit Monoclonal
Isotype	Rabbit IgG
Clone Name	CGG-19
Purity	Affinity purified
UniProt	P11166
Localization	Cell membrane
Applications	Western Blot : 1:500-1:2000 Immunohistochemistry (FFPE) : 1:50-1:200 Immunofluorescence : 1:50-1:200 Flow Cytometry : 1:50
Limitations	This GLUT1 antibody is available for research use only.



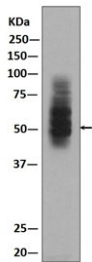
Immunofluorescent staining of human HepG2 cells with GLUT1 antibody (green) and DAPI nuclear stain (blue).



IHC staining of FFPE human cervical cancer with GLUT1 antibody. HIER: boil tissue sections in pH6, 10mM citrate buffer, for 10-20 min followed by cooling at RT for 20 min.



Flow cytometry testing of human HeLa cells with GLUT1 antibody; Red=cells alone, Blue= GLUT1 antibody.



Western blot testing of human HepG2 cell lysate with GLUT1 antibody. Predicted molecular weight ~55 kDa.

Description

The SLC2A1 gene encodes a major glucose transporter in the mammalian blood-brain barrier. The encoded protein is found primarily in the cell membrane and on the cell surface, where it can also function as a receptor for human T-cell leukemia virus (HTLV) I and II. Mutations in this gene have been found in a family with paroxysmal exertion-induced dyskinesia. [RefSeq]

Application Notes

Optimal dilution of the GLUT1 antibody should be determined by the researcher.

Immunogen

A synthetic peptide specific to human GLUT1 / SLC2A1 was used as the immunogen for the GLUT1 antibody.

Storage

Store the GLUT1 antibody at -20oC.