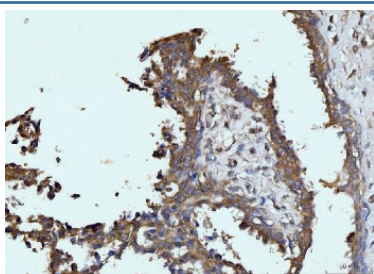


GLS Antibody / Glutaminase [clone 3G13] (RQ6734)

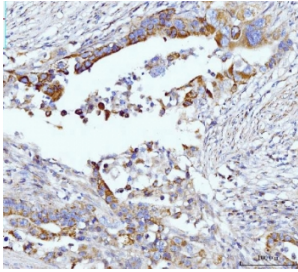
Catalog No.	Formulation	Size
RQ6734	0.5mg/ml if reconstituted with 0.2ml sterile DI water	100 ug

Bulk quote request

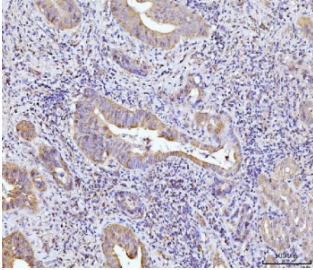
Availability	1-3 business days
Species Reactivity	Human, Mouse, Rat
Format	Purified
Clonality	Monoclonal (mouse origin)
Isotype	Mouse IgG2a
Clone Name	3G13
Purity	Affinity purified
Buffer	Lyophilized from 1X PBS with 2% Trehalose
UniProt	O94925
Localization	Cytoplasmic
Applications	Western Blot : 1-2ug/ml Immunohistochemistry (FFPE) : 2-5ug/ml Immunofluorescence (FFPE) : 5ug/ml Flow Cytometry : 1-3ug/million cells
Limitations	This GLS antibody is available for research use only.



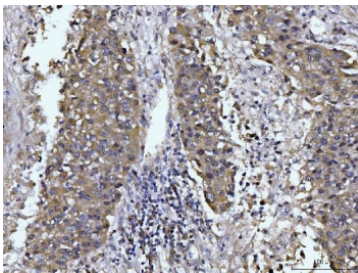
IHC staining of FFPE human breast cancer tissue with GLS antibody. HIER: boil tissue sections in pH8 EDTA for 20 min and allow to cool before testing.



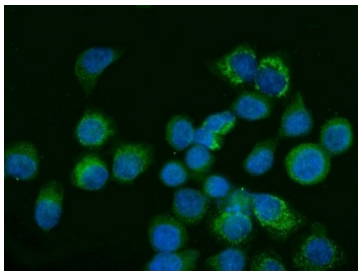
IHC staining of FFPE human appendiceal adenocarcinoma tissue with GLS antibody. HIER: boil tissue sections in pH8 EDTA for 20 min and allow to cool before testing.



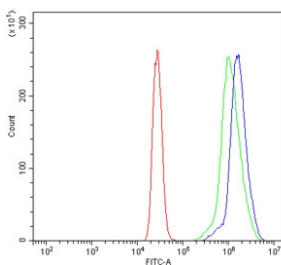
IHC staining of FFPE human gall bladder adenosquamous carcinoma tissue with GLS antibody. HIER: boil tissue sections in pH8 EDTA for 20 min and allow to cool before testing.



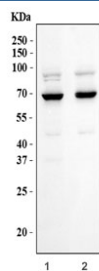
IHC staining of FFPE human liver cancer tissue with GLS antibody. HIER: boil tissue sections in pH8 EDTA for 20 min and allow to cool before testing.



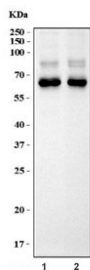
Immunofluorescent staining of FFPE human SiHa cells with GLS antibody (green) and DAPI nuclear stain (blue). HIER: steam section in pH6 citrate buffer for 20 min.



Flow cytometry testing of human U937 cells with GLS antibody at 1ug/million cells (blocked with goat sera); Red=cells alone, Green=isotype control, Blue= GLS antibody.



Western blot testing of human 1) HepG2 and 2) HEL cell lysate with GLS antibody. Predicted molecular weigh: 65-73 kDa.



Western blot testing of 1) rat brain and 2) mouse brain tissue lysate with GLS antibody.
Predicted molecular weigh: 65-73 kDa.

Description

This gene encodes the K-type mitochondrial glutaminase. The encoded protein is an phosphate-activated amidohydrolase that catalyzes the hydrolysis of glutamine to glutamate and ammonia. This protein is primarily expressed in the brain and kidney plays an essential role in generating energy for metabolism, synthesizing the brain neurotransmitter glutamate and maintaining acid-base balance in the kidney. Alternate splicing results in multiple transcript variants.

Application Notes

Optimal dilution of the GLS antibody should be determined by the researcher.

Immunogen

Recombinant human protein (amino acids K396-N654) was used as the immunogen for the GLS antibody.

Storage

After reconstitution, the GLS antibody can be stored for up to one month at 4oC. For long-term, aliquot and store at -20oC. Avoid repeated freezing and thawing.