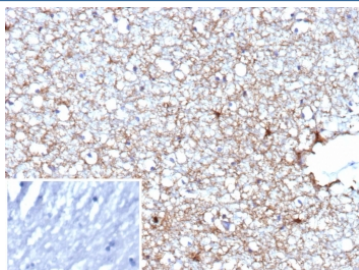


## Glial fibrillary acidic protein Antibody [clone GFAP/9426] (V5717)

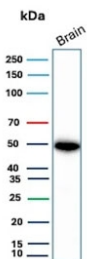
Catalog No.	Formulation	Size
V5717-100UG	0.2 mg/ml in 1X PBS with 0.1 mg/ml BSA (US sourced), 0.05% sodium azide	100 ug
V5717-20UG	0.2 mg/ml in 1X PBS with 0.1 mg/ml BSA (US sourced), 0.05% sodium azide	20 ug
V5717SAF-100UG	1 mg/ml in 1X PBS; BSA free, sodium azide free	100 ug

[Bulk quote request](#)

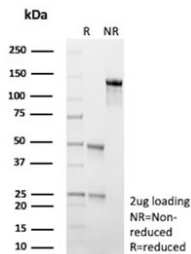
<b>Availability</b>	1-3 business days
<b>Species Reactivity</b>	Human
<b>Format</b>	Purified
<b>Clonality</b>	Monoclonal (mouse origin)
<b>Isotype</b>	Mouse IgG1, kappa
<b>Clone Name</b>	GFAP/9426
<b>Purity</b>	Protein G affinity
<b>UniProt</b>	P14136
<b>Localization</b>	Cytoplasm
<b>Applications</b>	Immunohistochemistry (FFPE) : 1-2ug/ml Western Blot : 2-4ug/ml
<b>Limitations</b>	This Glial fibrillary acidic protein antibody is available for research use only.



IHC staining of FFPE human brain tissue with Glial fibrillary acidic protein antibody (clone GFAP/9426). Inset: PBS used in place of primary Ab (secondary Ab negative control). HIER: boil tissue sections in pH 9 10mM Tris with 1mM EDTA for 20 min and allow to cool before testing.



Western blot testing of human brain tissue with Glial fibrillary acidic protein antibody (clone GFAP/9426). Predicted molecular weight ~50 kDa.



SDS-PAGE analysis of purified, BSA-free Glial fibrillary acidic protein antibody (clone GFAP/9426) as confirmation of integrity and purity.

## Description

This MAb recognizes a protein of ~50kDa which is identified as Glial Fibrillary Acidic Protein (GFAP). It shows no cross-reaction with other intermediate filament proteins. GFAP is specifically found in astroglia. GFAP is a very popular marker for localizing benign astrocyte and neoplastic cells of glial origin in the central nervous system. Antibody to GFAP is useful in differentiating primary gliomas from metastatic lesions in the brain and for documenting astrocytic differentiation in tumors outside the CNS.

## Application Notes

Optimal dilution of the Glial fibrillary acidic protein antibody should be determined by the researcher.

## Immunogen

A portion of amino acids 150-350 from human GFAP protein was used as the immunogen for the Glial fibrillary acidic protein antibody.

## Storage

Aliquot the Glial fibrillary acidic protein antibody and store frozen at -20oC or colder. Avoid repeated freeze-thaw cycles.