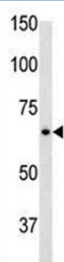


Glial fibrillary acidic protein Antibody (F47815)

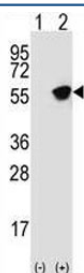
| Catalog No. | Formulation | Size |
|---------------|--|---------|
| F47815-0.4ML | In 1X PBS, pH 7.4, with 0.09% sodium azide | 0.4 ml |
| F47815-0.08ML | In 1X PBS, pH 7.4, with 0.09% sodium azide | 0.08 ml |

[Bulk quote request](#)

| | |
|-----------------------------|---|
| Availability | 1-3 business days |
| Species Reactivity | Human, Mouse |
| Predicted Reactivity | Bovine, Rat |
| Format | Purified |
| Clonality | Polyclonal (rabbit origin) |
| Isotype | Rabbit Ig |
| Purity | Purified |
| UniProt | P14136 |
| Applications | Western Blot : 1:1000 |
| Limitations | This Glial fibrillary acidic protein antibody is available for research use only. |



Glial fibrillary acidic protein antibody used in western blot to detect GFAP in mouse brain tissue lysate



Western blot analysis of Glial fibrillary acidic protein antibody and 293 cell lysate (2 ug/lane) either nontransfected (Lane 1) or transiently transfected (2) with the GFAP gene.

Description

GFAP is one of the major intermediate filament proteins of mature astrocytes. It is used as a marker to distinguish astrocytes from other glial cells during development. Mutations in this gene cause Alexander disease, a rare disorder of astrocytes in the central nervous system.

Application Notes

Titration of the Glial fibrillary acidic protein antibody may be required due to differences in protocols and secondary/substrate sensitivity.

Immunogen

A portion of amino acids 381-410 from the human protein was used as the immunogen for this Glial fibrillary acidic protein antibody.

Storage

Aliquot the Glial fibrillary acidic protein antibody and store frozen at -20oC or colder. Avoid repeated freeze-thaw cycles.