

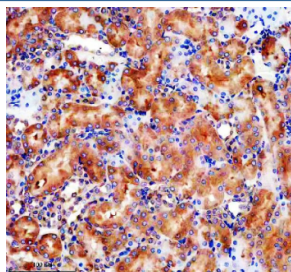
GLB1 Antibody / Beta galactosidase [clone 25G11] (RQ8918)

Catalog No.	Formulation	Size
RQ8918	Antibody in PBS with 0.02% sodium azide, 50% glycerol and 0.4-0.5mg/ml BSA	100 ul

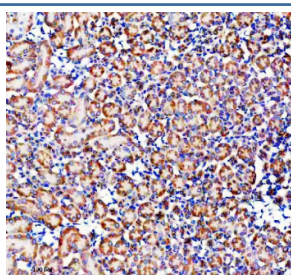
Recombinant **RABBIT MONOCLONAL**

[Bulk quote request](#)

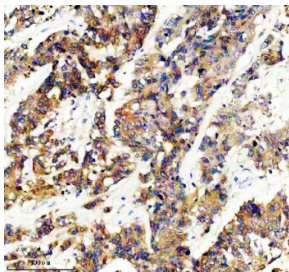
Availability	1-3 days
Species Reactivity	Human, Mouse, Rat
Format	Purified
Clonality	Recombinant Rabbit Monoclonal
Isotype	Rabbit IgG
Clone Name	25G11
Purity	Affinity chromatography
UniProt	P16278
Localization	Cytoplasm
Applications	Immunohistochemistry (FFPE) : 1:50
Limitations	This GLB1 antibody is available for research use only.



IHC staining of FFPE rat kidney tissue with GLB1 antibody, HRP-secondary and DAB substrate. HIER: boil tissue sections in pH8 EDTA for 20 min and allow to cool before testing.



IHC staining of FFPE mouse kidney tissue with GLB1 antibody, HRP-secondary and DAB substrate. HIER: boil tissue sections in pH8 EDTA for 20 min and allow to cool before testing.



IHC staining of FFPE human colon cancer tissue with GLB1 antibody, HRP-secondary and DAB substrate. HIER: boil tissue sections in pH8 EDTA for 20 min and allow to cool before testing.