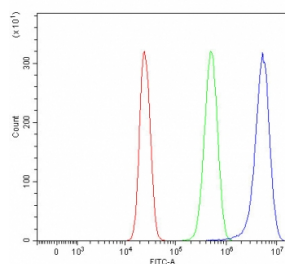


## Girdin Antibody / CCDC88A / GIV (RQ7828)

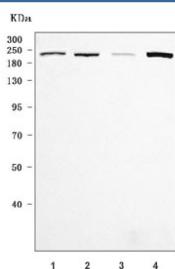
Catalog No.	Formulation	Size
RQ7828	0.5mg/ml if reconstituted with 0.2ml sterile DI water	100 ug

**Bulk quote request**

<b>Availability</b>	1-3 business days
<b>Species Reactivity</b>	Human, Rat
<b>Format</b>	Antigen affinity purified
<b>Clonality</b>	Polyclonal (rabbit origin)
<b>Isotype</b>	Rabbit IgG
<b>Purity</b>	Antigen affinity purified
<b>Buffer</b>	Lyophilized from 1X PBS with 2% Trehalose
<b>UniProt</b>	Q3V6T2
<b>Applications</b>	Western Blot : 0.5-1ug/ml Flow Cytometry : 1-3ug/million cells Direct ELISA : 0.1-0.5ug/ml
<b>Limitations</b>	This Girdin antibody is available for research use only.



Flow cytometry testing of human HepG2 cells with Girdin antibody at 1ug/million cells (blocked with goat sera); Red=cells alone, Green=isotype control, Blue= Girdin antibody.



Western blot testing of 1) human HeLa, 2) human SiHa, 3) rat brain and 4) rat RH-35 cell lysate with Girdin antibody. Predicted molecular weight ~216 kDa.

## Description

Girdin, also called G alpha-interacting vesicle-associated protein (GIV), is a protein that in humans is encoded by the CCDC88A gene. This gene encodes a member of the Girdin family of coiled-coil domain containing proteins. The encoded protein is an actin-binding protein that is activated by the serine/threonine kinase Akt and plays a role in cytoskeleton remodeling and cell migration. The encoded protein also enhances Akt signaling by mediating phosphoinositide 3-kinase (PI3K)-dependent activation of Akt by growth factor receptor tyrosine kinases and G protein-coupled receptors. Increased expression of this gene and phosphorylation of the encoded protein may play a role in cancer metastasis. Alternatively spliced transcript variants encoding multiple isoforms have been observed for this gene.

## Application Notes

Optimal dilution of the Girdin antibody should be determined by the researcher.

## Immunogen

E. coli-derived recombinant human protein (amino acids K1231-D1836) was used as the immunogen for the Girdin antibody.

## Storage

After reconstitution, the Girdin antibody can be stored for up to one month at 4°C. For long-term, aliquot and store at -20°C. Avoid repeated freezing and thawing.