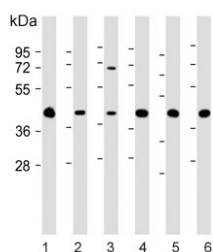


## GIPC1 Antibody / NIP (F54704)

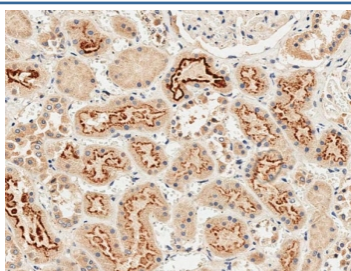
Catalog No.	Formulation	Size
F54704-0.4ML	In 1X PBS, pH 7.4, with 0.09% sodium azide	0.4 ml
F54704-0.08ML	In 1X PBS, pH 7.4, with 0.09% sodium azide	0.08 ml

[Bulk quote request](#)

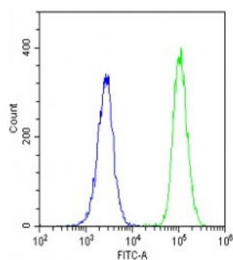
<b>Availability</b>	1-3 business days
<b>Species Reactivity</b>	Human, Mouse, Rat
<b>Format</b>	Purified
<b>Clonality</b>	Polyclonal (rabbit origin)
<b>Isotype</b>	Rabbit Ig
<b>Purity</b>	Antigen affinity purified
<b>UniProt</b>	O14908
<b>Localization</b>	Cytoplasmic
<b>Applications</b>	Western Blot : 1:500-1:2000 Flow Cytometry : 1:25 (1x10 <sup>6</sup> cells) Immunohistochemistry (FFPE) : 1:25
<b>Limitations</b>	This GIPC1 antibody is available for research use only.



Western blot testing of human 2) HEK293, 2) HeLa, 3) HepG2, 4) U-251 MG, 5) mouse brain and 6) rat brain lysate with GIPC1 antibody. Expected molecular weight: 36-42 kDa.



IHC testing of FFPE human kidney tissue with GIPC1 antibody. HIER: steam section in pH9 EDTA for 20 min and allow to cool prior to staining.



Flow cytometry testing of fixed and permeabilized human U-2 OS cells with GIPC1 antibody; Blue=isotype control, Green= GIPC1 antibody.

## Description

GIPC1 is a scaffolding protein that regulates cell surface receptor expression and trafficking.

## Application Notes

The stated application concentrations are suggested starting points. Titration of the GIPC1 antibody may be required due to differences in protocols and secondary/substrate sensitivity.

## Immunogen

A portion of amino acids 52-81 from the human protein was used as the immunogen for the GIPC1 antibody.

## Storage

Aliquot the GIPC1 antibody and store frozen at -20oC or colder. Avoid repeated freeze-thaw cycles.