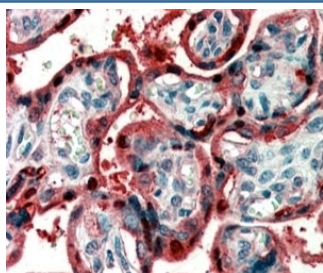


## Ghrelin Antibody (R35219)

Catalog No.	Formulation	Size
R35219-100UG	0.5 mg/ml in 1X TBS, pH7.3, with 0.5% BSA (US sourced) and 0.02% sodium azide	100 ug

### Bulk quote request

Availability	1-3 business days
Species Reactivity	Human, Rat
Format	Antigen affinity purified
Clonality	Polyclonal (goat origin)
Isotype	Goat Ig
Purity	Antigen affinity
Gene ID	51738
Applications	Immunohistochemistry (FFPE) : 2-5ug/ml Immunocytochemistry : suitable ELISA (peptide) LOD : 1:8000
Limitations	This Ghrelin antibody is available for research use only.



IHC testing of FFPE human placenta with Ghrelin antibody at 2ug/ml. HIER: steamed with pH6 citrate buffer, AP-staining.

## Description

Additional name(s) for this target protein: Ghrelin preproprotein; GHRL

## Application Notes

Optimal dilution of the Ghrelin antibody should be determined by the researcher.

## Immunogen

Amino acids QDILWEEAKEAPADK were used as the immunogen for this Ghrelin antibody.

## Storage

Aliquot and store the Ghrelin antibody at -20oC.