

GFRA1 Antibody (R31615)

Catalog No.	Formulation	Size
R31615	0.5mg/ml if reconstituted with 0.2ml sterile DI water	100 ug

Bulk quote request

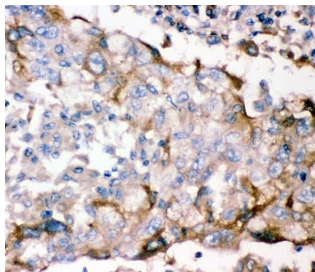
Availability	1-3 business days
Species Reactivity	Human
Format	Antigen affinity purified
Clonality	Polyclonal (rabbit origin)
Isotype	Rabbit IgG
Purity	Antigen affinity
Buffer	Lyophilized from 1X PBS with 2.5% BSA and 0.025% sodium azide
Gene ID	14585
Applications	Western Blot : 0.5-1ug/ml IHC (FFPE) : 0.5-1ug/ml
Limitations	This GFRA1 antibody is available for research use only.



Western blot testing of GFRA1 antibody and human placenta lysate. Predicted/observed size ~50KD



Western blot testing of GFRA1 antibody and recombinant human protein (0.5ng)



IHC-P: GFRA1 antibody testing of human lung cancer tissue

Description

GNDF family receptor alpha-1, also known as the GDNF receptor, is a protein that in humans is encoded by the GFRA1 gene. It is mapped to chromosome 10q25.3. The protein encoded by this gene is a member of the GDNF receptor family. GFRA1 is released by neuronal cells, Schwann cells, and injured sciatic nerve. It is a glycosylphosphatidylinositol(GPI)-linked cell surface receptor for both GDNF and NTN, and mediates activation of the RET tyrosine kinase receptor. This gene is also a candidate gene for Hirschsprung disease. Soluble GFRA1 mediates robust recruitment of RET to lipid rafts via a mechanism requiring the RET tyrosine kinase.

Application Notes

The stated application concentrations are suggested starting amounts. Titration of the GFRA1 antibody may be required due to differences in protocols and secondary/substrate sensitivity.

Immunogen

Human partial recombinant protein (AA 25-227) was used as the immunogen for this GFRA1 antibody.

Storage

After reconstitution, the GFRA1 antibody can be stored for up to one month at 4°C. For long-term, aliquot and store at -20°C. Avoid repeated freezing and thawing.