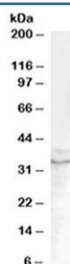


## GDF15 Antibody (R35339)

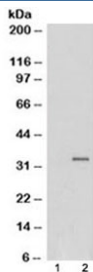
Catalog No.	Formulation	Size
R35339-100UG	0.5 mg/ml in 1X TBS, pH7.3, with 0.5% BSA (US sourced) and 0.02% sodium azide	100 ug

[Bulk quote request](#)

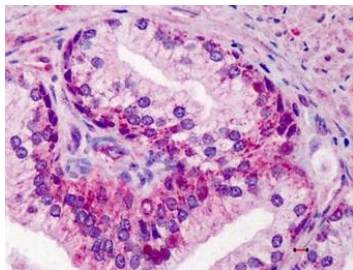
Availability	1-3 business days
Species Reactivity	Human
Predicted Reactivity	Mouse, Rat
Format	Antigen affinity purified
Clonality	Polyclonal (goat origin)
Isotype	Goat Ig
Purity	Antigen affinity
Gene ID	9518
Localization	Cytoplasmic
Applications	Western Blot : 0.1-0.3ug/ml Immunohistochemistry : 5ug/ml ELISA (peptide) LOD : 1:2000 Flow Cytometry : 10ug/10 <sup>6</sup> cells
Limitations	This GDF15 antibody is available for research use only.



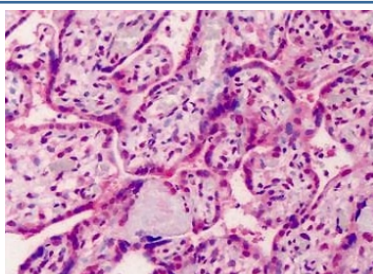
Western blot testing of human prostate lysate with GDF15 antibody at 0.1ug/ml.  
Predicted molecular weight ~34 kDa (pro-form) and ~25 kDa (mature form).



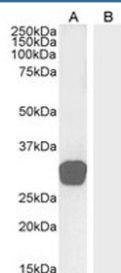
Western blot of HEK293 lysate overexpressing GDF15 probed with GDF15 antibody (mock transfection in lane 1). Predicted molecular weight ~34 kDa.



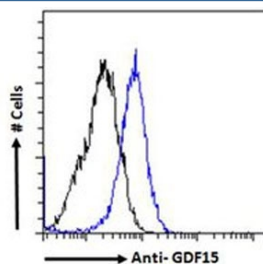
IHC testing of FFPE human prostate tissue with GDF15 antibody at 5ug/ml. Required HIER: steamed antigen retrieval with pH6 citrate buffer; AP-staining.



IHC testing of FFPE human placenta tissue with GDF15 antibody at 5ug/ml. Required HIER: steamed antigen retrieval with pH6 citrate buffer; AP-staining.



Western blot testing of human testis lysate (A) and human skin lysate (B, negative control) with GDF15 antibody at 0.3ug/ml. Predicted molecular weight ~34 kDa (pro-form) and ~25 kDa (mature form).



Flow cytometry testing of PFA-fixed human HeLa cells with GDF15 antibody (blue) and naive control (black).

## Description

Additional name(s) for this target protein: Growth differentiation factor 15

## Application Notes

Optimal dilution of the GDF15 antibody should be determined by the researcher.

## Immunogen

Amino acids QKTDGTGVSLQTYDD were used as the immunogen for this GDF15 antibody.

## Storage

Aliquot and store the GDF15 antibody at -20oC.