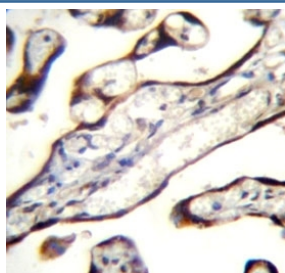


GDF15 Antibody (F42280)

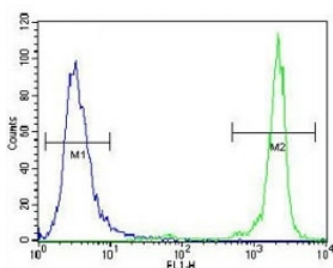
Catalog No.	Formulation	Size
F42280-0.4ML	In 1X PBS, pH 7.4, with 0.09% sodium azide	0.4 ml
F42280-0.08ML	In 1X PBS, pH 7.4, with 0.09% sodium azide	0.08 ml

Bulk quote request

Availability	1-3 business days
Species Reactivity	Human
Format	Antigen affinity purified
Clonality	Polyclonal (rabbit origin)
Isotype	Rabbit Ig
Purity	Antigen affinity
UniProt	Q99988
Applications	Western Blot : 1:1000 IHC (Paraffin) : 1:10-1:50 Flow Cytometry : 1:10-1:50
Limitations	This GDF15 antibody is available for research use only.



GDF15 antibody immunohistochemistry analysis in formalin fixed and paraffin embedded human placenta tissue.



GDF15 antibody flow cytometric analysis of NCI-H460 cells (green) compared to a negative control (blue). FITC-conjugated goat-anti-rabbit secondary Ab was used for the analysis.

95
72
55
36
28
17

GDF15 antibody western blot analysis in NCI-H460 lysate. Predicted molecular weight ~34 kDa (pro-form) and ~25 kDa (mature form).

Description

Bone morphogenetic proteins are members of the transforming growth factor-beta superfamily and regulate tissue differentiation and maintenance. They are synthesized as precursor molecules that are processed at a dibasic cleavage site to release C-terminal domains containing a characteristic motif of 7 conserved cysteines in the mature protein.

Application Notes

Titration of the GDF15 antibody may be required due to differences in protocols and secondary/substrate sensitivity.

Immunogen

A portion of amino acids 51-79 from the human protein was used as the immunogen for this GDF15 antibody.

Storage

Aliquot the GDF15 antibody and store frozen at -20oC or colder. Avoid repeated freeze-thaw cycles.