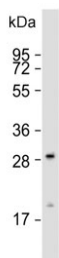


GCLM Antibody / Glutamate-Cysteine Ligase Regulatory Subunit (F54261)

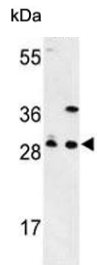
Catalog No.	Formulation	Size
F54261-0.4ML	In 1X PBS, pH 7.4, with 0.09% sodium azide	0.4 ml
F54261-0.08ML	In 1X PBS, pH 7.4, with 0.09% sodium azide	0.08 ml

[Bulk quote request](#)

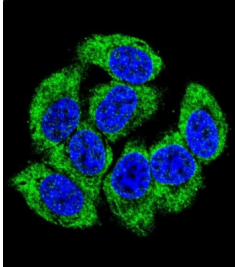
Availability	1-3 business days
Species Reactivity	Human, Mouse
Format	Purified
Clonality	Polyclonal (rabbit origin)
Isotype	Rabbit Ig
Purity	Antigen affinity purified
UniProt	P48507
Gene ID	2730
Localization	Cytoplasmic
Applications	Western Blot : 1:1000-1:2000 Immunohistochemistry (FFPE) : 1:25-50 Flow Cytometry : 1:25 (1x10 ⁶ cells) Immunofluorescence : 1:25
Limitations	This GCLM antibody is available for research use only.



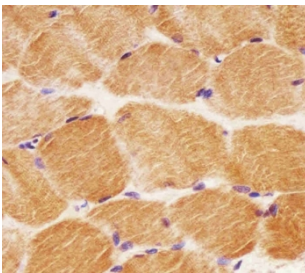
Western blot testing of human HeLa cell lysate with GCLM antibody. Predicted molecular weight ~31 kDa.



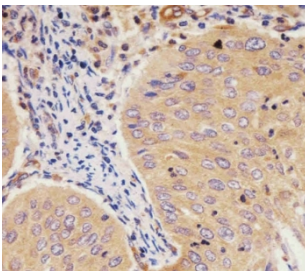
Western blot testing of 1) human 293 and 2) mouse kidney lysate with GCLM antibody. Predicted molecular weight ~31 kDa.



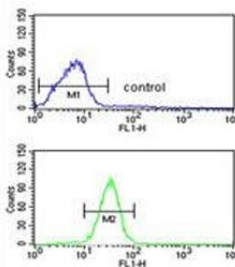
Immunofluorescent staining of fixed and permeabilized human 293 cells with GCLM antibody (green) and DAPI nuclear stain (blue).



IHC testing of FFPE human skeletal muscle tissue with GCLM antibody. HIER: steam section in pH6 citrate buffer for 20 min and allow to cool prior to staining.



IHC testing of FFPE human cervical carcinoma tissue with GCLM antibody. HIER: steam section in pH6 citrate buffer for 20 min and allow to cool prior to staining.



Flow cytometry testing of fixed and permeabilized human 293 cells with GCLM antibody; Blue=isotype control, Green= GCLM antibody.

Description

GCLM known as gamma-glutamylcysteine synthetase, is the first rate limiting enzyme of glutathione synthesis. The enzyme consists of two subunits, a heavy catalytic subunit and a light regulatory subunit. Gamma glutamylcysteine synthetase deficiency has been implicated in some forms of hemolytic anemia.

Application Notes

The stated application concentrations are suggested starting points. Titration of the GCLM antibody may be required due to differences in protocols and secondary/substrate sensitivity.

Immunogen

A portion of amino acids 246-274 from the human protein were used as the immunogen for the GCLM antibody.

Storage

Aliquot the GCLM antibody and store frozen at -20oC or colder. Avoid repeated freeze-thaw cycles.