

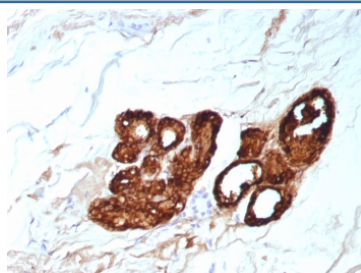
GCDFP-15 Antibody / Gross cystic disease fluid protein 15 / Prolactin-Induced Protein [clone PIP/9076R] (V5231)

Catalog No.	Formulation	Size
V5231-100UG	0.2 mg/ml in 1X PBS with 0.1 mg/ml BSA (US sourced), 0.05% sodium azide	100 ug
V5231-20UG	0.2 mg/ml in 1X PBS with 0.1 mg/ml BSA (US sourced), 0.05% sodium azide	20 ug
V5231SAF-100UG	1 mg/ml in 1X PBS; BSA free, sodium azide free	100 ug

Recombinant **RABBIT MONOCLONAL**

[Bulk quote request](#)

Availability	1-3 business days
Species Reactivity	Human
Format	Purified
Clonality	Recombinant Rabbit Monoclonal
Isotype	Rabbit IgG, kappa
Clone Name	PIP/9076R
Purity	Protein A/G affinity
UniProt	P12273
Localization	Cytoplasm, Secreted
Applications	Immunohistochemistry (FFPE) : 1-2ug/ml for 30 min at RT
Limitations	This GCDFP-15 antibody is available for research use only.



IHC staining of FFPE human breast carcinoma tissue with GCDFP-15 antibody (clone PIP/9076R). HIER: boil tissue sections in pH 9 10mM Tris with 1mM EDTA for 20 min and allow to cool before testing.

Description

It recognizes a protein of 15kDa, identified as Gross cystic disease fluid protein 15 (GCDFP-15). It is a major protein component of benign breast gross cysts. It is a known marker of breast cancer, as it is found in approximately 50% of all breast cancer specimens. GCDFP-15, also known as Prolactin-Induced Protein (PIP), for prolactin inducible protein, is a

prolactin and androgen-controlled protein. This antibody is useful in the identification of metastatic breast carcinoma, or fluid analysis.

Application Notes

Optimal dilution of the GCDFP-15 antibody should be determined by the researcher.

Immunogen

A recombinant partial protein sequence (within amino acids 1-146) from the human protein was used as the immunogen for the GCDFP-15 antibody.

Storage

Aliquot the GCDFP-15 antibody and store frozen at -20oC or colder. Avoid repeated freeze-thaw cycles.