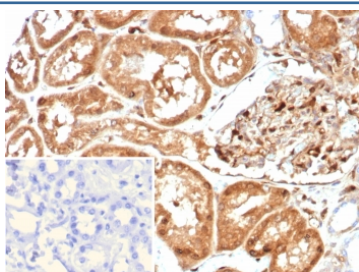


GBP1 Antibody / Guanylate binding protein 1 [clone GBP1/7618] (V4663)

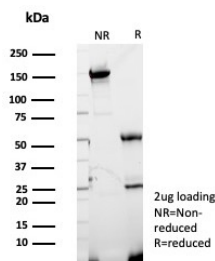
Catalog No.	Formulation	Size
V4663-100UG	0.2 mg/ml in 1X PBS with 0.1 mg/ml BSA (US sourced), 0.05% sodium azide	100 ug
V4663-20UG	0.2 mg/ml in 1X PBS with 0.1 mg/ml BSA (US sourced), 0.05% sodium azide	20 ug
V4663SAF-100UG	1 mg/ml in 1X PBS; BSA free, sodium azide free	100 ug

[Bulk quote request](#)

Availability	1-3 business days
Species Reactivity	Human
Format	Purified
Clonality	Monoclonal (mouse origin)
Isotype	Mouse IgG
Clone Name	GBP1/7618
Purity	Protein A/G affinity
UniProt	P32455
Localization	Cytoplasm, Cell membrane, Secreted
Applications	Immunohistochemistry (FFPE) : 1-2ug/ml for 30 min at RT
Limitations	This GBP1 antibody is available for research use only.



IHC staining of FFPE human kidney tissue with GBP1 antibody (clone GBP1/7618). Inset: PBS used in place of primary Ab (secondary Ab negative control). HIER: boil tissue sections in pH 9 10mM Tris with 1mM EDTA for 20 min and allow to cool before testing.



SDS-PAGE analysis of purified, BSA-free GBP1 antibody (clone GBP1/7618) as confirmation of integrity and purity.

Description

GBP1 (guanylate binding protein 1) is a 592 amino acid protein member of the GTPase protein family and is able to bind specifically to guanine nucleotides such as GMP, GDP and GTP. GMP is hydrolyzed to GTP in two consecutive cleavage steps, both of which are carried out by GBP1. Localized to the cytoplasm, GBP1 is expressed in endothelial cells of the vascular system and is induced by IFN- γ during macrophage induction. GBP1 is thought to regulate the expression of MMP-1, which mediates the proliferation and invasiveness of endothelial cells. GBP1 plays a key role in regulating inflammatory cytokines and provides protection against vesicular stomatitis and encephalomyocarditis viruses. GBP1 expression is highly induced in the vessels of skin diseases such as psoriasis and Kaposi s sarcoma, making it a novel cellular activation marker that characterizes inflammatory cytokines of endothelial cells.

Application Notes

Optimal dilution of the GBP1 antibody should be determined by the researcher.

Immunogen

A recombinant partial protein sequence (within amino acids 400-592) from the human protein was used as the immunogen for the GBP1 antibody.

Storage

Aliquot the GBP1 antibody and store frozen at -20oC or colder. Avoid repeated freeze-thaw cycles.