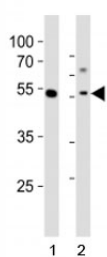


Gata6 Antibody (F52801)

| Catalog No. | Formulation | Size |
|---------------|--|---------|
| F52801-0.4ML | In 1X PBS, pH 7.4, with 0.09% sodium azide | 0.4 ml |
| F52801-0.08ML | In 1X PBS, pH 7.4, with 0.09% sodium azide | 0.08 ml |

[Bulk quote request](#)

| | |
|-----------------------------|---|
| Availability | 1-3 business days |
| Species Reactivity | Human, Mouse |
| Predicted Reactivity | Rat, Chicken |
| Format | Antigen affinity purified |
| Clonality | Polyclonal (rabbit origin) |
| Isotype | Rabbit Ig |
| Purity | Antigen affinity |
| UniProt | Q61169 |
| Applications | Western Blot : 1:1000 |
| Limitations | This Gata6 antibody is available for research use only. |



Western blot analysis of lysate from 1) human MCF-7 cell line and 2) mouse liver tissue using Gata6 antibody at 1:1000. Predicted molecular weight: 60, 45 kDa (isoforms 1, 2).

Description

Transcriptional activator that regulates SEMA3C and PLXNA2. Involved in gene regulation specifically in the gastric epithelium (By similarity).

Application Notes

Titration of the Gata6 antibody may be required due to differences in protocols and secondary/substrate sensitivity.

Immunogen

This mouse Gata6 antibody was produced from a rabbit immunized with a KLH conjugated synthetic peptide between 485-518 amino acids from the C-terminal region of mouse Gata6.

Storage

Aliquot the Gata6 antibody and store frozen at -20oC or colder. Avoid repeated freeze-thaw cycles.